



DELHI PUBLIC SCHOOL

SAIL TOWNSHIP, RANCHI

ANNUAL EXAMINATION (2022-23)

Class - VII
Time - 3 Hours

Subject - Mathematics
Maximum Marks- 80

General Instructions:

1. The question paper has 5 sections A to E.
2. Section A has 20 MCQ's carrying 1 mark each.
3. Section B has 5 questions carrying 2 marks each.
4. Section C has 6 questions carrying 3 marks each.
5. Section D has 4 questions carrying 5 marks each.
6. Section E has 3 case based integrated units of assessment (04 marks each) with subparts of the value of 1, 1 and 2 marks each respectively.
7. All questions are compulsory. However, an internal choice in 2 questions of 5 marks, 2 questions of 3 marks and 2 questions of 2 marks has been provided. An internal choice has been provided in the 2 marks questions of Section E.
8. Draw neat figures wherever required. Take $\pi = \frac{22}{7}$ wherever required if not stated. Do rough work in the right margin neatly.

SECTION - A [20X1=20]

1. Find the value of: $351x(-20) + 351x(-80)$
(a) -35100 (b) 35100 (c) -3500 (d) 3500
2. The average of 4.6, 8.5 and 9.7 is
(a) 7.5 (b) 7.6 (c) 7.8 (d) 7.7
3. By how much 59.71 be decreased to get 34.58?
(a) 25.10 (b) 25.11 (c) 25.13 (d) 25.12
4. The mean of 10 observations is 3.5. If two observations namely 3.5 and 2.5 are deleted, the new mean will be
(a) 3.625 (b) 3.265 (c) 3.562 (d) 3.652
5. On solving $\frac{x}{5} - 1 = 0.04$, $x =$
(a) 5 (b) 5.2 (c) 5.25 (d) 5.52
6. Simplify : $[29 - (-2)\{6 - (7 - 3)\}]$
(a) 31 (b) 30 (c) 33 (d) 34
7. If the difference of an integer 'a' and (-2a) is 6, find the value of 'a'.
(a) -1 (b) 1 (c) -2 (d) 2
8. Find the angle which is double of its supplement.
(a) 30° (b) 60° (c) 120° (d) 180° .

9. If the measures of the angles of a triangle are $(2x)^0$, $(3x-5)^0$ and $(4x-13)^0$, find the smallest angle.
 (a) 65^0 (b) 44^0 (c) 34^0 (d) 61^0
10. If $\triangle ABC$ and $\triangle DBC$ are on the same base BC, $AB=DC$ and $AC=DB$, then which of the following gives a congruence relationship?
 (a) $\triangle ABC \cong \triangle DBC$ (b) $\triangle ABC \cong \triangle CBD$ (c) $\triangle ABC \cong \triangle DCB$ (d) none of these
11. Find the value of $3x^2 - 5x + 3$ when $x = -1$ is
 (a) -11 (b) -5 (c) 5 (d) 11
12. There are 25 radios, 16 of them are out of order. What per cent of radios are not out of order?
 (a) 9% (b) 16% (c) 64% (d) 36%
13. Find the area of a square park whose perimeter is 320 cm.
 (a) 0.64 m^2 (b) 64 m^2 (c) 0.32 m^2 (d) 32 m^2
14. Express 23600000 in standard form
 (a) 23.6×10^{-7} (b) 2.36×10^7 (c) 23.6×10^7 (d) 2.36×10^{-7}
15. What is the full form of CPCT
 (a) Corresponding parts of corresponding triangles
 (b) Congruent parts of corresponding triangles
 (c) Corresponding parts of congruent triangles
 (d) none of these
16. The sum of the numerical coefficients in the terms of $4x^2y - 5xy^2 + 6xy$ is
 (a) -6 (b) 6 (c) -5 (d) 5
17. Give an example of a geometrical figure which has neither a line symmetry nor a rotational symmetry.
 (a) scalene triangle (b) square (c) rectangle (d) isosceles triangle
18. How many edges are in a tetrahedron?
 (a) 5 (b) 6 (c) 4 (d) 3
19. What should be added to $\frac{-7}{8}$ so as to get $\frac{5}{9}$?
 (a) $\frac{23}{72}$ (b) $\frac{-23}{72}$ (c) $\frac{103}{72}$ (d) none of these
20. The product $3\frac{1}{7} \times 1\frac{5}{6} \times 1\frac{2}{5} \times 1\frac{4}{11}$ is equal to
 (a) 21 (b) 22 (c) 77 (d) 11

SECTION - B [5X2=10]

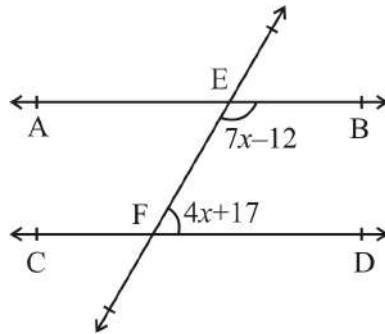
21. A car runs 36 km using 2 litres of petrol. How much distance will it cover using $4\frac{3}{4}$ litres of petrol?

OR

The length of a rectangle is 17.1 cm and its breadth is 12.5 cm. What is the area of the rectangle?

22. Solve: $\frac{2x-1}{3} + 1 = \frac{x-2}{3} + 2$

23. Find 'x' from the following figure, where $AB \parallel CD$, $\angle BEF = (7x-12)^\circ$ and $\angle DFE = (4x+17)^\circ$. (Justify your answer)



24. What must be added to $12x^3 - 4x^2 + 3x - 7$ to make the sum $x^3 + 2x^2 - 3x + 2$?

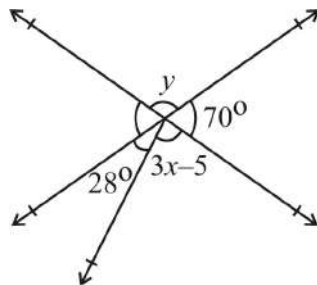
OR

Simplify: $5m^2n - 5m^2 + 3nm^2 + 9 - 3n^2 + m^2 - n^2 + 8mn^2 - 3n^2p - 4$

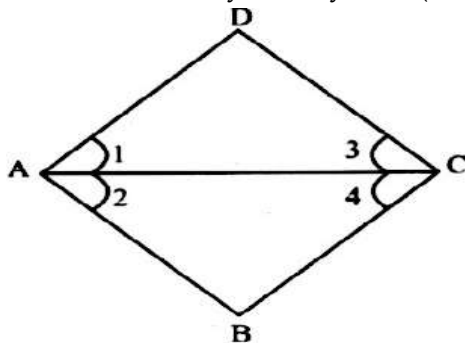
25. Draw a line AB and take a point P outside of it. Draw a line CD parallel to AB and passing through the point P.

SECTION - C [6X3=18]

26. Find x and y . (justify your answer)



27. In the figure $\angle 1 = \angle 2$ and $\angle 3 = \angle 4$,
 (a) Is $\triangle ADC \cong \triangle ABC$? Why?
 (b) Is $AD=AB$ and $CD=CB$? Why or why not? (Write reason)



28. Divide the sum of $\frac{-13}{5}$ and $\frac{12}{7}$ by the product of $\frac{-31}{7}$ and $\frac{-1}{2}$

OR

List six rational numbers between: $\frac{-4}{5}$ and $\frac{-2}{3}$.

29. Construct a ΔABC in which $AB = 5$ cm, $\angle B = 45^\circ$ and $\angle A = 60^\circ$. Also, draw the perpendicular bisector of BC . Write the steps of construction.

30. Fill in the blanks :

Shape	Line of symmetry	Order of Rotation	Angle of Rotation
Square			
Circle			

31. (a) Draw a net of a cube, cylinder and rectangular pyramid.

(b) Write the number of faces, vertices and edges of a Hexagonal Prism.

OR

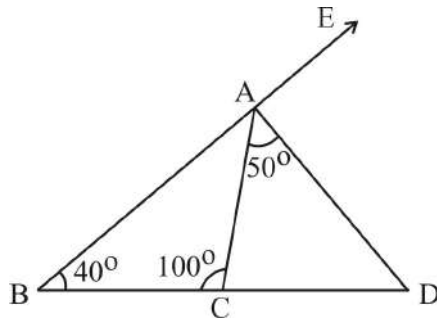
(a) Draw a Square Pyramid, and a Triangular Prism.

(b) Verify Euler's formula for a solid has 4 faces.

[2+1=3]

SECTION - D [4x5=20]

32. (a) From the figure, find out the value of [with proper reason] (i) $\angle ACD$, (ii) $\angle ADC$, (iii) $\angle DAE$.



(b) A tree is broken at a height of 6m from the ground and its top touches the ground at a distance of 8m from the base of the tree. Find the original height of the tree.

33. (a) What principal will amount to Rs.900 in 6 years at 10% simple interest?

(b) 'a', 'b' and 'c' are three sums of money such that 'b' is the simple interest on 'a' and 'c' is the simple interest on 'b' for the same time and same rate. Prove that $b^2 = ac$.

OR

Juhi sells a washing machine for Rs.13,500. She loses 20% in the bargain. What was the price at which she bought it?

(c) Chalk contains calcium, carbon and oxygen in the ratio 10:3:12. Find the percentage of carbon in chalk.

34. The two sides of the parallelogram ABCD are 16 cm and 14 cm. The height corresponding to the base CD is 10 cm . Find the (i) area of the parallelogram. (ii) the height corresponding to the base AD.(iii) Find out the ratio of the heights of the parallelogram corresponding to the base CD and corresponding to the base AB respectively.

OR

Shazli took a wire of length 44 cm and bent it into the shape of a circle. Find the radius of that circle. Also find its area. If the same wire is bent into the shape of a square, what will be the length of each of its sides? Which figure encloses more area, the circle or the square? (Take $\pi=22/7$)

35. Simplify(apply laws of exponent) :

(a) $\frac{3^5 \times 10^5 \times 125}{5^7 \times 6^5}$. [3+2=5]

(b) If $2^n = 1024$, find the value of $2^{\frac{n}{2}+2}$

SECTION - E [3x4=12]

36. The average birth weight for babies is around 3.5kg, although between 2.5kg and 4.5kg is considered normal. In general, Boys are usually a little heavier than girls.....

The weights of new born babies(in kg) in a hospital on a particular day are as follows:

2.3,2.2,2.1,2.7,2.6,3.0,2.5,2.9, 2.8,3.1,2.5,2.8,2.7,2.9,2.4

- (a) Determine the range of the given data.
 (b) How many babies weigh below 2.5kg? [1+1+2]
 (c) Rearrange the weights in ascending order and find out the median of the given weights.

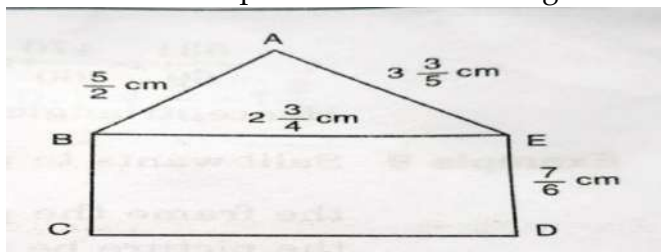
OR

Find out the average weight of the given data.

37. A perimeter is a closed path that encompasses, surrounds or outlines of a two dimensional shape or the total length of the boundary.....

In the adjoining figure,

- (a) Find the perimeter of ΔABE
 (b) What is the ratio of the perimeter of the rectangle BCDE and the perimeter of the ΔABE .



[1+1+2]

- (c) Find out the area of the rectangle BCDE

OR

Find the perimeter of the pentagon ABCDE

38. BIRTHDAY PARTY BLESSINGS.....

Raju's father gave him Rs. $3(xy^2+xy)$ and his sister gave him Rs. $5(xy^2+2xy+2)$. Out of this total money he spent Rs $(10-3xy^2+4xy)$ on his birthday party and donated Rs. $11xy$ to a Ramkrishna Mission.

- (a) How much money is given by Raju's father to Raju? [1+1+2]
(b) How much total amount is spent by Raju on his birthday party?
(c) How much money is left with Raju after birthday party?

OR

How much total amount of money was with Raju before birthday party?



DELHI PUBLIC SCHOOL
SAIL TOWNSHIP, RANCHI
ANNUAL EXAMINATION (2022-23)

Class - VII
Time - 3 Hour

Subject - Hindi
Maximum Marks- 80

निर्देश – (i) प्रश्न पत्र के दो खंड हैं – ‘क’ और ‘ख’
(ii) यथासंभव दोनों खंडों के उत्तर क्रमशः लिखें।

प्रश्न (1) निम्नलिखित गद्यांश को ध्यानपूर्वक पढ़कर उपयुक्त उत्तर वाले विकल्प चुनकर लिखिए। (1x5=5)

(क) आज का युग विज्ञान का युग कहा जाता है। विज्ञान ने आज हमें अनेक चमत्कारी वस्तुएँ प्रदान करके हमारे जीवन को सुगम तथा सरस बना दिया है। विज्ञान ने मानव-जीवन में अनेक क्रांतिकारी परिवर्तन किए हैं। ‘प्लास्टिक’ भी उन्हीं में से एक है। प्लास्टिक का आविष्कार ड्यूबोयस और जोन द्वारा किया गया था। प्रारंभ में यह लोकप्रिय नहीं हुआ पर आज तो यह एक बड़े तथा महत्त्वपूर्ण उद्योग-धंधे के रूप में प्रतिष्ठित हो चुका है तथा जीवन का अभिन्न अंग बन गया है। आज प्लास्टिक का प्रयोग छोटी-छोटी चीजों से लेकर बड़ी-बड़ी वस्तुओं तक में किया जाता है। आज तो प्लास्टिक के बिना जीवन की कल्पना भी नहीं की जा सकती। कारों, टेलीफोन, कंप्यूटर, हवाई जहाजों, बिजली के तारों, रेडियो, टी.वी. आदि अनेक वस्तुओं में प्लास्टिक का व्यापक प्रयोग किया जा रहा है। प्लास्टिक के आज हमारी दुनिया बदल दी है जिधर जाइए उधर प्लास्टिक की बनी आकर्षक वस्तुएँ नजर आएंगी। प्लास्टिक के ही एक रूप से वस्त्रों का निर्माण भी किया जाता है। ‘पोलिएस्टर’ में प्लास्टिक का ही प्रयोग किया जाता है। प्लास्टिक की यह विशेषता है कि इसे रि-साइकिल किया जा सकता है, इसे गलाकर पुनः नया प्लास्टिक बनाया जा सकता है।

(i) प्लास्टिक का आविष्कार किसने किया था?

(क) ड्यूबोयस ने (ख) जोन ने (ग) ड्यूबोयस और जोन ने (घ) डगलस ने

(ii) प्लास्टिक की क्या विशेषता है?

(क) रि-साइकिल किया जा सकता है (ख) रि-साइकिल नहीं किया जा सकता
(ग) यह अनुपयोगी है (घ) इनमें से कोई नहीं

(iii) ----- प्लास्टिक का बना एक वस्त्र है।

(क) जकार्ड (ख) ऊनी कपड़ा (ग) पोलिएस्टर (घ) सूती कपड़ा

(iv) प्लास्टिक ----- का प्रमुख आविष्कार है।

(क) आधुनिक युग (ख) प्राचीन काल (ग) वीरकाल (घ) कोई भी नहीं

(v) योजक चिह्न वाले शब्द हैं –

(क) वस्तुएँ (ख) उद्योग-धंधे (ग) पुनः (घ) प्रारंभ

(ख) निम्नलिखित गद्यांश को ध्यानपूर्वक पढ़कर दिए गए प्रश्नों के उत्तर विकल्पों से चुनकर लिखिए।

(1x5=5)

चरित्र का संबंध चाल-चलन, कार्य-कलाप तथा उसके संपूर्ण व्यक्तित्व से है। इसीलिए चरित्र को ‘आदतों का समूह’ कहा गया है। व्यक्ति की सभी छोटी-बड़ी आदतें उसके चरित्र की द्योतक हैं। चरित्र का ही दूसरा नाम ‘सदाचार’ है। किसी भी व्यक्ति, समाज अथवा राष्ट्र की उन्नति का मूल आधार ‘चरित्र बल’ ही है।

जिस देश के नागरिक चरित्रवान होते हैं, वह उन्नति की ओर बढ़ता चला जाता है। इसके विपरीत नागरिकों की चरित्रहीनता देश के पतन का प्रमुख कारण होती है। चरित्रवान बनने के लिए व्यक्ति को सुशिक्षा, सत्संगति, अध्यवसाय तथा आत्मविश्वास की आवश्यकता पड़ती है। चरित्र बल ही व्यक्ति को प्रतिकूल परिस्थितियों में अपार सहास, धैर्य, उत्साह तथा प्रेरणा देता है। छोटा-सा देश जापान आज अपने निवासियों के चरित्र बल के कारण ही विश्व के प्रमुख राष्ट्रों में गिना जाता है। आज आवश्यकता इस बात की है कि हम भी अपने पूर्वजों के चरित्र का अनुसरण करें तथा चरित्रवान बनने का प्रयास करें।

(i) 'आदतों का समूह' किसे कहा गया है?

(क) व्यक्तित्व को (ख) मन को (ग) चरित्र को (घ) नागरिक का

(ii) 'चरित्र बल' राष्ट्र की ----- का मूल आधार है।

(क) उन्नति (ख) अवनति (ग) पतन (घ) अधोगति

(iii) चरित्र का दूसरा नाम ----- है।

(क) सम्मान (ख) सदाचार (ग) संगति (घ) सुविचार

(iv) आज हमारी आवश्यकता है कि हम -----

(क) पूर्वजों के चरित्र का अनुसरण करें (ख) पूर्वजों की सीख को न मानें
(ग) दूसरा रास्ता अपनाएँ (घ) इनमें से कोई भी नहीं

(v) कौन-सा देश अपने चरित्र बल के कारण प्रमुख राष्ट्रों में गिना जाता है?

(क) चीन (ख) जापान (ग) नेपाल (घ) भारत

व्याकरण

प्रश्न (2) निर्देशानुसार बहुविकल्पीय प्रश्नों के उत्तर लिखें।

(1x20=20)

(i) संस्कृत की लिपि ----- है।

(क) उर्दू (ख) देवनागरी (ग) रोमन (घ) कोई नहीं

(ii) दीर्घ स्वर की संख्या ----- है।

(क) ग्यारह (ख) दो (ग) सात (घ) चार

(iii) गुण शब्द का अनेकार्थक शब्द ----- है।

(क) हाथी (ख) रस्सी (ग) खेत (घ) तीर

(iv) कुछ ऐसे शब्द, जिनका प्रयोग दोनों लिंगों में बिना रूप बदले होता है ----- कहलाते हैं

(क) लिंग (ख) स्त्रीलिंग (ग) पुल्लिंग (घ) उभयलिंगी

(v) यहाँ सूखा पड़ा था। वाक्य काल के किस भेद से संबंधित है?

(क) वर्तमान काल (ख) भूतकाल (ग) भविष्यत् काल (घ) कोई नहीं

(vi) निम्नलिखित उपसर्ग से बने सही शब्द का चयन कर लिखिए:

सम्- (क) सुगंध (ख) सम्मान (ग) सुरुचि (घ) सुकोमल

(vii) भविष्यत् काल वाला वाक्य है -

(क) मोहन हँसता है (ख) रमा ने चाय पी ली (ग) मोहन चित्र बनाएगा (घ) रमा खेल रही है

(viii) अत्यंत शब्द में कौन-सा उपसर्ग जुड़ा है?

(क) अ (ख) उत् (ग) अति (घ) अन्

(ix) किसान की ----- उद्यमी है।

(क) ज़ाया (ख) जाया (ग) जागना (घ) जग

(x) जिन क्रिया विशेषण शब्द से कार्य की मात्रा, परिमाण का बोध हो, उसे ----- क्रिया विशेषण कहते हैं।

(क) कालवाचक (ख) स्थानवाचक (ग) रीतिवाचक (घ) परिमाणवाचक

(xi) स्थानवाचक क्रियाविशेषण का उदाहरण है :

(क) भीतर (ख) आज (ग) भारी (घ) धीरे-धीरे

(xii) कौन-सा शब्द समूह कन्या का पर्यायवाची समूह है?

(क) सुता,बेटी,आत्मजा (ख) पुत्री,बेटी,अग्रज (ग) सुता,आत्मजा,पुत्री (घ) कोई भी नहीं

(xiii) हर्ष का विलोम ----- होता है।

(क) शोक (ख) अहित (ग) अज्ञानी (घ) मित्र

(xiv) जहाँ पहुँचा न जा सके - वाक्यांश के लिए एक शब्द है -

(क) गम्य (ख) अगम्य (ग) अदृश्य (घ) अनुपम

(xv) हँसी शब्द में कौन-सा प्रत्यय है -

(क) ई (ख) इ (ग) हँस (घ) कोई नहीं।

(xvi) तैराक शब्द में प्रत्यय है -

(क) आक (ख) क (ग) तैरना (घ) अक

(xvii) खोज करने वाला-वाक्यांश के लिए एक शब्द है -

(क) खोजी (ख) अन्वेषक (ग) आस्तिक (घ) अजर

(xviii) रचना के आधार पर शब्द के ----- भेद हैं।

(क) एक (ख) दो (ग) तीन (घ) चार

(xix) तालाब शब्द ----- है।

(क) रूढ़ (ख) यौगिक (ग) योगरूढ़ (घ) निरर्थक

(xx) सही शब्द छाँटें।

(क) नुपुर (ख) नूपुर (ग) नूपुर (घ) नूपूर

प्रश्न (3) पठित काव्यांश को ध्यानपूर्वक पढ़कर दिए गए प्रश्नों के उत्तर विकल्पों से चुनकर लिखिए।

(1X5=5)

आकाश का साफ़ा बाँधकर
सूरज की चिलम खींचता बैठा पहाड़,
घुटनों पर पड़ी है नदी चादर-सी
पास ही दहक रही है,
पलाश के जंगल की अंगीठी।

(i) इस काव्यांश के कवि हैं –

(क) शिवमंगल सिंह 'सुमन'

(ख) सर्वेश्वरदयाल सक्सेना

(ग) सुमित्रा नंदन पंत

(घ) महादेवी वर्मा

(ii) इनमें से चिलम की एकरूपता किसके साथ है?

(क) आकाश के

(ख) पलाश के

(ग) सूरज के

(घ) नदी के

(iii) पहाड़ ने अपने सिर पर किसका साफ़ा बाँधा है?

(क) आकाश का

(ख) सूरज का

(ग) वृक्ष का

(घ) कोई नहीं

(iv) उपयुक्त काव्यांश किस कविता से लिया गया है?

(क) एक तिनका

(ख) विप्लव-गायन

(ग) शाम – एक किसान

(घ) वह चिड़िया

(v) जंगल की अँगीठी किसे कहा गया है?

(क) सूरज को

(ख) आग को

(ग) पलाश के फूल को

(घ) तारों को

प्रश्न (4)

यासुको-चान को पोलियो था, इसलिए वह न तो किसी पेड़ पर चढ़, पाता था और न किसी पेड़ को निजी संपत्ति मानता था। अतः तोतो-चान ने उसे अपने पेड़ पर आमंत्रित किया था। पर यह बात उन्होंने किसी से भी नहीं कही थी, क्योंकि अगर बड़े सुनते तो जरूर डाँटते। घर से निकलते समय तोतो-चान ने माँ से कहा कि वह यासुकी-चान के घर डेनेनचोफु जा रही है। चूँकि वह झूठ बोल रही थी, इसलिए उसने माँ की आँखों में नहीं झाँका।

(1X5=5)

(i) गद्यांश के लेखक का नाम लिखिए।

(क) तेत्सुको कुरियानागी

(ख) प्रेमचंद

(ग) जैनंद्र कुमार

(घ) कोई भी नहीं

(ii) तोतो-चान ने उसे कहाँ आमंत्रित किया?

(क) अपने घर पर

(ख) पार्क में

(ग) अपने पेड़ पर

(घ) स्टेशन पर

(iii) यासुकी-चान कहाँ रहता था?

(क) तोमोए में

(ख) डेनेनचोफु में

(ग) स्कूल में

(घ) पार्क के पास

(iv) यह गद्यांश किस पाठ से लिया गया है?

(क) मिठाईवाला

(ख) अपूर्व अनुभव

(ग) नीलकण्ठ

(घ) वीर कुँवर सिंह

(v) पोलियो के कारण यासुकी-चान किसे अपनी निजी संपत्ति नहीं मानता था?

(क) घर को

(ख) पेड़ को

(ग) गाँव को

(घ) विद्यालय को

खण्ड 'ब' (वर्णनात्मक प्रश्न)

प्रश्न (5) निम्नलिखित प्रश्नों के उत्तर लिखिए।

(1X4=4)

(i) पक्षियों के पंख कब टूट जाते हैं? (कविता के आधार पर)

(ii) खिलौने वाले का गाना सुनकर बच्चों की क्या प्रतिक्रिया होती थी?

(iii) खान-पान की बदलती तस्वीर का सबसे अधिक प्रभाव किस वर्ग पर पड़ा?

(iv) निम्नलिखित क्षेत्रीय शब्दों के प्रचलित हिन्दी रूप लिखिए –

निकसार, ब्याह

प्रश्न (6) लघु उत्तरीय प्रश्नों के उत्तर दें :-

(2X4=8)

- (क) काका कालेलकर ने नदियों को लोकमाता क्यों कहा है?
(ख) खान-पान में बदलाव से लेखक क्यों चिंतित है? कारण बताएँ।
(ग) 'एक तिनका' कविता के माध्यम से कवि समाज को क्या संदेश देना चाहते हैं?
(घ) कालकूट फणि की चिन्तामणि - से कवि का क्या तात्पर्य है?

प्रश्न (7) दीर्घ उत्तरीय प्रश्नों के उत्तर विस्तार से लिखिए :-

(2X3=6)

- (i) पाठ के किन प्रसंगों से पता चलता है कि वीर कुँवर सिंह उदार एवं स्वाभिमानी व्यक्ति थे?
(ii) 'नीलकंठ' पाठ किसकी रचना है? वसंत ऋतु में नीलकंठ के लिए जालीघर में रहना असहनीय क्यों हो जाता था?

(iii) किसी एक दोहे का अर्थ स्पष्ट करें।

(2)

थोथे बादर क्वार के, ज्यों रहीम घहरात।

धनी पुरुष निर्धन भए, करें पाछिली बात।।

या

तरुवर फल नहीं खात है, सरवर पियत न पान।

कहि रहीम परकाज हित, संपति-संचहिं सुजान।।

बाल महाभारत आधारित प्रश्न

प्रश्न (8) किन्हीं पाँच प्रश्नों के उत्तर लिखिए :-

(2X5=10)

- (i) विचित्रवीर्य को हस्तिनापुर का राजा क्यों बनाया गया था?
(ii) युधिष्ठिर से पूछे गए प्रश्नों के सही उत्तर पर यक्ष ने क्या किया?
(iii) राजा शान्तुन ने केवटराज की शर्त को क्यों नहीं माना?
(iv) विकर्ण कौन था? वह अन्य कौरव से कैसे भिन्न था?
(v) पृथा का नाम कुंती कैसे पड़ा?
(vi) कर्ण का पालन-पोषण किसने किया? दुर्योधन ने कर्ण को किस देश का राजा बनाया?
(vii) द्रोणाचार्य परशुराम के पास क्यों गए?
(viii) भीम का रास्ता किसने रोका था? उसने भीम से क्या कारण बताया ?
(ix) युधिष्ठिर के राज्याभिषेक के बाद धृतराष्ट्र ने आशीर्वाद देते हुए क्या कहा?

प्रश्न (9) निम्नलिखित विषयों में से किसी एक विषय पर अनुच्छेद लिखें।

(5X1=5)

(क) श्रम का महत्त्व

भूमिका - लाभ, हानि, उपसंहार

(ख) होली का त्योहार

भूमिका - क्यों और कैसे मनाया जाता है, महत्त्व, निष्कर्ष

(ग) मधुर वचन

भूमिका- क्या हैं, लाभ, - हानि, उपसंहार

प्रश्न (10) निम्नलिखित में से किसी एक विषय पर पत्र लिखिए।

(5)

मित्र को हिन्दी प्रदर्शनी में प्रथम पुरस्कार मिलने पर बधाई पत्र लिखें।

या

मामाजी को राँची के दर्शनीय स्थल भ्रमण हेतु निमंत्रण पत्र लिखिए।



DELHI PUBLIC SCHOOL
SAIL TOWNSHIP, RANCHI
ANNUAL EXAMINATION (2022-23)

Class - VII
Time - 3 Hours

Subject - Social Science
Maximum Marks - 80

General Instructions:

- i. All questions are compulsory
 - ii. There is no overall choice in the question paper. However, an internal choice has been provided in few questions. Only one of the choices in such questions have to be attempted.
-

HISTORY

I. Choose the correct option

(1X9=9)

1. Ziyauddin Barani of 14th century was
 - A. a sultan
 - B. a chronicler
 - C. an invader
 - D. a musician
2. Jati as a term refers to
 - A. a sub caste
 - B. a military camp
 - C. a new religion
 - D. all of these.
3. Kharaj was an important source of revenue. It was
 - A. a tax in the Mughal empire
 - B. a tax on cattle
 - C. a tax in Delhi Sultanate
 - D. a tax on houses.
4. The expansion of the Delhi Sultanate took place gradually. They had garrison which was
 - A. a countryside
 - B. a hinterland
 - C. a fortified settlement with soldiers
 - D. son of king.
5. The administrative system of some tribal kingdoms was becoming centralised. In the Gond kingdom, Chaurasi was divided into
 - A. khel
 - B. barhots
 - C. garh
 - D. paiks.

6. Bhuiyans
 - A. were landlords of Assam
 - B. were landlords of Gondwana
 - C. removed the Ahoms from Assam
 - D. fought against Cheros.
7. Tevaram was
 - A. a compilation of the songs of Nayanars
 - B. an Alvar saint
 - C. a compilation of songs of Alvars
 - D. a hagiography
8. In a well organised Chola administration, Nadu was
 - A. a samanta
 - B. a group of villages
 - C. a tax
 - D. a smaller unit than a village.
9. By the seventh century a new factor emerged in different regions of the subcontinent. This was that of a Samanta which meant
 - A. a place of worship
 - B. a sabha
 - C. a warrior chief
 - D. a thief

II. Answer these questions very briefly :

1. Who was Surdas? Mention his two compositions compiled in Sursagara. ($1 + \frac{1}{2} + \frac{1}{2} = 2$)
2. Who was Rani Durgawati ? Enumerate her achievements. (1+1=2)

III. Answer in short :

1. What was the relationship between the mansabdar and the jagir? (3)
2. Throw light on the history of Chero chiefdoms of Jharkhand and Bihar. Mention two other tribes of Jharkhand. (2+1=3)

IV. Answer in details:

What do you understand by the term Bhakti? Explain the philosophy of Advaita and mention the name of the saint who propounded it. (2+2+1=5)

V. Read the passage carefully and answer the following:

With the decline in the authority of the Mughal emperors, the governors of large provinces, subadars, and the great zamindars consolidated their authority in different parts of the subcontinent. Through the eighteenth century, the Mughal Empire gradually fragmented into a number of independent, regional states. Broadly speaking the states of the eighteenth century can be divided into three overlapping groups: (1) States that were old Mughal provinces like Awadh, Bengal and Hyderabad. Although extremely powerful and quite independent, the rulers of these states did not break their formal ties with the Mughal emperor. (2) States that had enjoyed considerable independence under the Mughals as watanjagirs. These included several Rajput principalities. (3) The last group included states under the control of Marathas, Sikhs and others

like the Jats. These were of differing sizes and had seized their independence from the Mughals after a long-drawn armed struggle.

- A. What was watan jagir? (2)
- B. Who founded the autonomous state of Hyderabad? (1)
- C. Who was Shivaji? (1)

CIVICS

I. Choose the correct option : (1X3=3)

1. Civil Rights Movement

- A. began in 1950s .
- B. took place for the right to equality of the African-American people in The USA.
- C. demanded an end to racial discrimination.
- D. All of the above.

2. A gathering of the journalists from the media who are invited to hear about and ask questions on a particular issue is called

- A. a get together
- B. an institution
- C. press conference
- D. chit fund.

3. The term Public is used for an activity

- A. organised by the government
- B. organised by an individual
- C. by a company
- D. all of the above.

II. Answer very briefly:

- 1. What do you mean by the term double burden? Support with a suitable example. (1+1=2)
- 2. What does the term stereotype mean? Mention a stereotype about women. (1+1=2)
- 3. List any two ways in which a hawker is different from a shop owner? (2)

III. Answer in short:

- 1. Throw light on the terms 'invisible', 'physically demanding', and 'time consuming' in the context of the household tasks undertaken by women in their houses. Explain each with the help of a suitable example. (1+1+1=3)
- 2. Describe any three methods of struggle that the Women's Movement use to raise issues of concern? (3)

IV. Answer in details:

Explain the working of the chain of markets? Why is a wholesale trader necessary in a market ? (3+2=5)

V. Read the passage carefully and answer the following:

The media decides what to focus on and in this way it 'sets the agenda'. The government can, at times, prevent the media from publishing a story and this is called censorship. Nowadays, media's close relationship with business often means that a balanced report is difficult to come by. Given this, it is important for us to be aware that the 'factual information' that a news report provides is often not complete and can be one-sided. We, therefore, need to analyse the news by asking the following questions: what is the information I am learning from this report? What information is not being provided? From whose point of view is the article being written? Whose point of view is being left out and why?

Answer the following:

- A. Give one reason why censorship is essential in media . (1)
B. Why should we not totally depend upon the 'factual information' that a news report provides? (2)
C. Mention one link between media and big business houses (1)

GEOGRAPHY

I. Choose the correct option: (1×4=4)

1. Which is not human made environment?
A. Land C. Road
B. Train D. Aeroplane
2. Which one of the following domains is held up by the gravitational forces?
A. Lithosphere C. Biosphere
B. Hydrosphere D. Atmosphere
3. Which one among the following is True?
A. Thar desert, India has recorded the highest temperature of the world.
B. The Ladakh desert is mainly inhabited by Christians.
C. The Chiru or the Tibetan antelope is an endemic species.
D. Skeletons of fish have been found in Sahara desert.
4. Name the term that signifies " It is an arid region characterised by extremely high or low temperatures and scanty vegetation".
A. Desert C. Gulf
B. Forest D. Basin

II. Answer the following questions in short: (3×3= 9)

1. What are the precautions should be taken during earthquake? (Give three points)
OR
Discuss any three erosional work of wind.
2. What are the three types of wind explain each?
3. Write any three characteristics of tropical evergreen forests .

III. Answer the following questions in detail:

(5x1=5)

1. Give brief note on "Tsunami".

OR

Discuss the different types of ocean currents along with examples.

IV. Read the given extract and answer the following questions:

(4)

Lava is actually fiery red molten magma coming out from the interior of the earth on its surface. When this molten lava comes on the earth's surface, it rapidly cools down and becomes solid. Rocks formed in such a way on the crust are called extrusive igneous rocks. They have a very fine grained structure. Sometimes the molten magma cools down deep inside the earth's crust. Solid rocks so formed are called intrusive igneous rocks. Since they cool down slowly they form large grains. Grinding stones used to prepare paste/powder of spices and grains are made of granite. Rocks roll down, crack, and hit each other and are broken down into small fragments. These smaller particles are called sediments. These sediments are transported and deposited by wind, water, etc. These loose sediments are compressed and hardened to form layers of rocks. These types of rocks are called sedimentary rocks. For example, sandstone is made from grains of sand. These rocks may also contain fossils of plants, animals and other micro-organisms that once lived on them. Igneous and sedimentary rocks can change into metamorphic rocks under great heat and pressure. For example, clay changes into slate and limestone into marble.

1. Which type of rocks are found in Deccan plateau? **(1)**
2. Give one example of intrusive igneous rock. **(1)**
3. How are sedimentary rocks formed? **(2)**

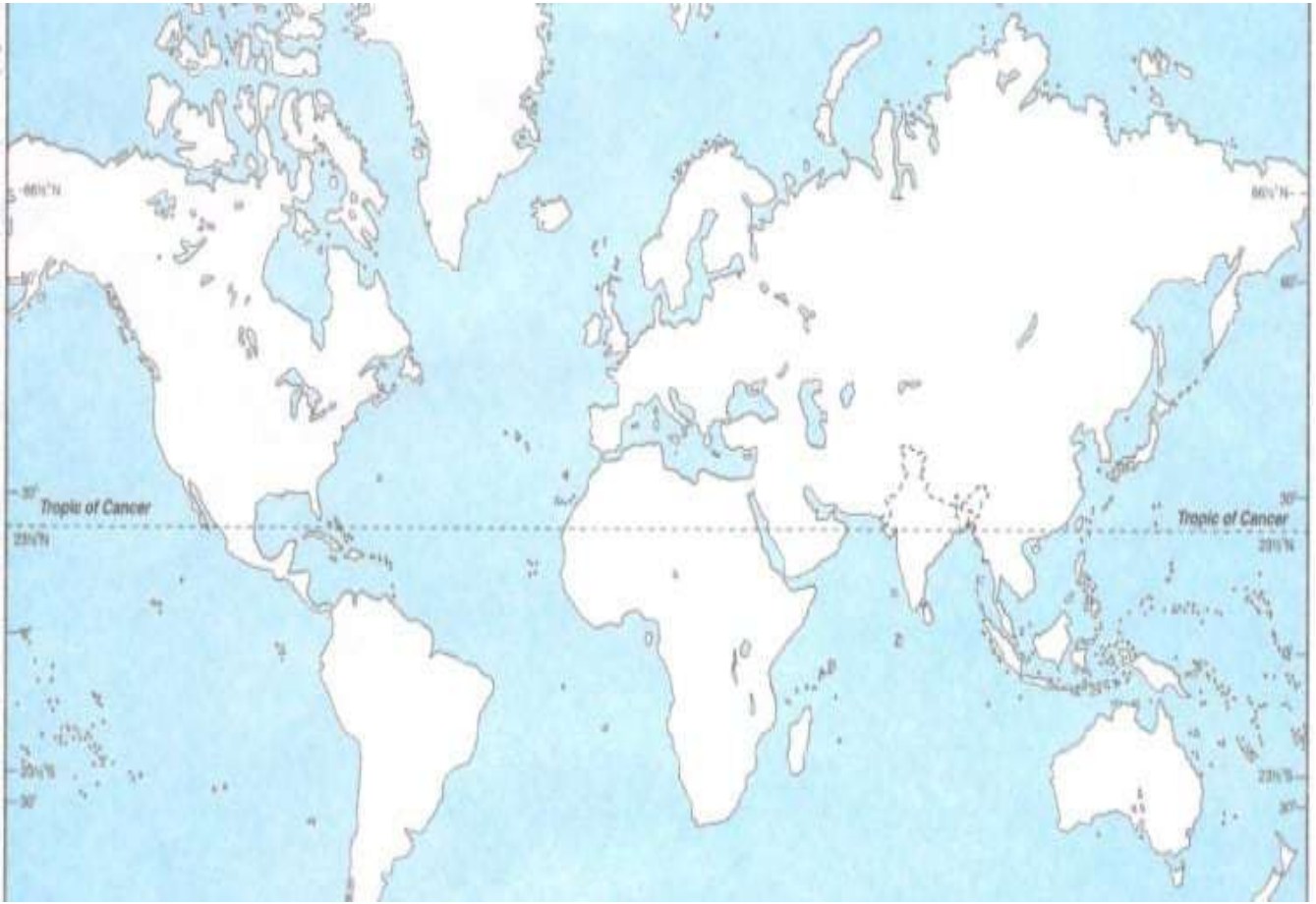
V. Draw and label the diagram of Major pressure belts of the Earth.

(3)

VI. Locate and label the following in the physical map of the world.

(1×3=3)

- a) New York Seaport
 - b) New Delhi Airport
 - c) Rio de Janerio Seaport
-





DELHI PUBLIC SCHOOL
SAIL TOWNSHIP, RANCHI
ANNUAL EXAMINATION (2022-23)

Class - VII
Time - 3 Hours

Subject - English
Maximum Marks- 80

GENERAL INSTRUCTIONS :

1. The question paper is divided into Three Sections: A, B & C
2. It is compulsory to attempt all the sections.
3. Handwriting carries marks.

SECTION -A : READING

A1 :Read the following passage.

Tourism is travel for recreation, leisure, religious, family or business purposes, normally for a limited duration. Tourism has become a popular global leisure activity. Tourism can either be domestic or international. Tourism can be classified as either inbound or outbound tourism. Today inbound tourism is a major source of income for many countries. Especially in terms of foreign exchange earned by the country as a whole. It also has a substantial impact on the local economy and employment of a place frequently visited by tourists.

India is a country with a rich cultural heritage which has always fascinated travellers. It is a unique land of diversities where all kinds of natural beauty including desert, sea, forests, mountains, flowers, wildlife is present within a single geographical boundary of a country. Anybody visiting India will have experience of different dresses, culture, flora and fauna in different states. Thus India has always been a destination for tourists who want to enjoy this combination of culture, tradition and rich heritage. Not only this, foreign tourists act as “Ambassadors of Indian Culture” and take the message further across the world.

The Indian government has made various efforts to take advantage of these unique possessions to promote tourism.

On the basis of your understanding, answer the questions that follow: (1x10=10)

1. What do you understand by ‘tourism’?
2. What fascinates travellers visiting India?
3. Can India be a popular tourist destination? Give two reasons.
4. Who acts as the “Ambassadors of Indian Culture?”
5. Tourism can be classified either as ortourism.
6. Inbound tourism has an impact on local
(a) People (b) Language
(c) Employment (d) Flora

7. The rich cultural heritage of India has always travellers.
(a) Attracted (b) Pushed
(c) Repelled (d) Discouraged
8. The government of India took several steps to promote in the country.
(a) Tourism (b) diversity
(c) Employment (d) economy
9. Choose the correct synonym of the word 'frequently'.
(a) consecutive (b) regularly
(c) occasionally (d) seemingly
10. Which among the following is the antonym for the word 'unique'
(a) Common (b) Different
(c) rare (d) exclusive

A2: Read the following poem.

Once there were two magnificent towers,
Where lived and worked so many of ours.
It took seven long years to build them straight,
They stood near the Empire State.
This event happened on the eleventh of September,
It's an occurrence that generations will remember.
Because thousands of people have died,
Not only of US, but the world's pride.
Everyone saw with awe and fright,
Twin towers crash in broad daylight.
None quite knows what will happen now,
When ?Where ?and how ?
May God give wisdom to those,
Who are devils in gentlemen's pose.
Now let us all remove hatred and vice,
And let the world be happy and nice.

On the basis of your understanding, answer the questions that follow:

(1x10=10)

1. Give a suitable title to this poem.
2. How many years it took to build the towers?
3. For whom the poet is seeking wisdom ?
4. What does poet ask us to do to make the world a happy place?

5. According to the poem, in which country the twin towers were situated?
6. The poem is about
- (a) a day in the month of September
 - (b) a tragedy that occurred on the 11th of September
 - (c) the importance of number eleven
 - (d) the wonderful events of the month of September
7. The pronoun 'them' in the third line refers to.....
- (a) people
 - (b) Empire State building
 - (c) towers
 - (d) seven years
8. The expression 'Who are devils in gentlemen's pose' can be replaced by.....
- (a) dogs which look like cats
 - (b) snakes in the grass
 - (c) horses with zebra stripes
 - (d) wolves in lamb's clothing
9. Which word has been used in the poem as the synonym of 'panic'?
- (a) Fright
 - (b) Crash
 - (c) Vice
 - (d) Pose
10. In the end, the poetess hopes that.....
- (a) God forgives the wrong doers
 - (b) we seek forgiveness for all of our sins
 - (c) we join hands in replacing evil with good intentions
 - (d) we watch whatever is happening in silence

SECTION -B WRITING AND GRAMMAR

- B3. The Editor of "The Times of India" has invited its readers to write to him/her about their problems related to examinations. He/she will select the problems and suggest practical tips to solve them. Write a letter to the Editor telling him/her what changes do you want in the existing examination pattern. **(1X5=5)**

OR

Your school organised the Annual Science Exhibition ACADEXPO for the academic session 2022-2023. Your model won the first prize in the exhibition. Write a diary entry expressing your excitement and happiness. Also mention how grateful you are for your parents' help in preparing the model. **(1X5=5)**

B4. Write a story based on the given cues and give a suitable title and moral to it : (1X5=5)

A woman going to town.....carrying a pail of milk.....sell the milk in the town.....starts dreaming will buy some hens from the money earned by selling milk.....the hens will lay eggs every daywill sell eggs and earn more money.....purchase new dress.....if anyone asks her the secret of earning so much money.....she will nod her headand she nodded her head..... the pail of milk fell down.

C5. Do as directed: (1X10=10)

1. Take this medicine every four hours. (Separate the subject and the predicate)
2. The man who invited you to dinner is my uncle (Identify the main clause and the subordinate clause)
3. The Chief Minister made an appeal. (Underline the verb and state if the verb has been used transitively or intransitively)
4. A series of exhibitions _____ been organised by the authorities. (have/has) (Choose the correct form of the verb)
5. Dr. Ray, as well as his team, _____ received the award. (has/have) (Choose the correct form of the verb)
6. That doctor can understand animal language. (Underline the determiner and state its kind)
7. Rita _____ I have made a plan. (Fill in the blank with coordinating conjunctions)
8. Give me some food. I am hungry. (Join the sentences with suitable conjunctions)
9. The little girl sat _____ a banyan tree. . (Fill in the blank with suitable preposition)
10. She is unwell, so she cannot go out to play. (Identify the sentence as simple or compound)

C6. Do as directed : (1X3=3)

- (i) Three of my friends will be coming over to my place next Sunday. (Rewrite the statement in **simple past tense**)
- (ii) Professor read out an essay that I _____ (write). (Use **past perfect tense** of the given verb)
- (iii) The girls planned a party for Sunday. (Rewrite the statement in **future continuous tense**)

C7. Fill in the blanks with appropriate modal verb. (1X2=2)

- (i) A baby _____ always recognise its mother's voice.
- (ii) You _____ look into the eye of the people when you talk to them.

C8. Identify the phrases and state its kind. (1X2=2)

- (i) He travels every year to his hometown.
- (ii) A man of great wealth entered the room.

C9. Change the sentences from direct to indirect speech. (1X3=3)

- (i) He said, 'I bought a bracelet for my mother.'
- (ii) She said to them, 'Leave the room right now.'
- (iii) He said, 'Oh no ! We've missed the flight.'

C10. Rewrite these sentences in passive voice. (1X2=2)

- (i) Mr Sen gave an interesting book to me.
- (ii) The farmer ploughed his fields.

C11. Identify the non-finite verbs and name it. (1X3=3)

- (i) Cherries are good to eat.
- (ii) I like eating ice-cream during the winters.
- (iii) We rescued the passengers from the wrecked car.

SECTION-C :LITERATURE

D12. Read the lines given below and answer the questions that follow. (4X4=8)

A Follow your feet across a wood land floor
beneath the tall and ancient sycamore.

- (i) Name the poem and the poet.
- (ii) Where does the speaker want the children to follow their feet to ?
- (iii) Write the meaning of the word 'Sycamore'.
- (iv) The antonym of 'ancient' is _____ .

B. 'But at this moment you and khaala are equal in my eyes.'

- (i) Who is the speaker?
- (ii) Who are the two people he is referring to in the above line ?
- (iii) What do these lines reflect about the speaker's behaviour ?
- (iv) Why did he say that they were equal in his eyes ?

D13. Answer any five questions in 30 to 40 words. (2X5=10)

- (i) Describe the relationship between Jumman and Algu.
- (ii) What do you understand by 'back to basics'?
- (iii) What would happen if there were no trees on earth ?
- (iv) Who was the poet upset with and why ? (Lines Written in Early Spring)

- (v) Who said that the world has grown smaller? Who supported this argument and how did he justify the argument?
- (vi) Why didn't the Grandmother want to keep the python at home?

D14. What, according to the speaker, is 'Nature's holy plan'? When humanity fails to live in harmony with nature, its effects are felt around the world. Why and how? (Lines Written in Early Spring) **(1X5=5)**

OR

Describe the Grandfather and the scene when he brought home a python.

- D15. (a) Give the antonym of 'Genial' **(1X2=2)**
- (b) Write the meaning of the phrase 'In black and white.'
-



DELHI PUBLIC SCHOOL

SAIL TOWNSHIP, RANCHI

ANNUAL EXAMINATION (2022-23)

Class - VII
Time - 3 Hours

Subject - Science
Maximum Marks- 80

Attempt all questions. However there are internal choices. Rough work to be done in the right margin.

PHYSICS

Choose the most appropriate answer. [2 x 1 = 2]

1. The splitting up of white light into seven colours on passing through a glass prism is called

- (a) refraction
- (b) deflection
- (c) dispersion
- (d) scattering

[1]

2. The physical quantity which we cannot obtain from a D- T graph is

- (a) speed
- (b) time taken
- (c) change in position
- (d) acceleration

[1]

Very short answer questions. [2x 1 = 2]

3. Write any two advantages of mercury to be used as a thermometric liquid. [1]

4. A shopkeeper wanted to fix a mirror which will give a maximum view of his shop. What type of mirror should he use? Give reason. [1]

Short answer questions [3 x 2 = 6]

5. What is an electromagnet? Sketch a labelled diagram. [2]

6. What is a second's pendulum? A simple pendulum takes 52s to complete 20 oscillations, what is the time period of the pendulum? [2]

7. Write any two properties of thermal radiations. [2]

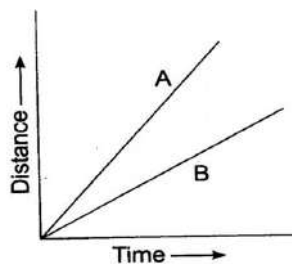
Long answer questions [4x 3 = 12]

8. (a) Convert 98.6 °F into °C and Kelvin

(b) A thick glass tumbler is found to crack when hot tea is poured in to it. Explain. [3]

9. (a) A car moves with a speed of 40 km/h for 15 minutes and then with a speed of 60 km/h for the next 15 minutes. Calculate the total distance travelled by the car.

(b) Figure shows the distance-time graph for the motion of two vehicles A and B. Which one of them is moving faster? Explain. [3]



10. (a) Name the material used to make the heating element of electrical appliances. Write their features.
 (b) Can we use a piece of copper wire instead of a fuse wire in an electrical circuit? Explain. [3]
11. (a) Sketch the formation of image for a point object by a plane mirror.
 (b) What do you mean by a virtual image? [3]

Very long answer questions. [1x 5 = 5]

12. (a) Differentiate between a permanent magnet and electromagnet. (Any three points)
 (b) Draw and label the circuit diagram of an electric bell.

OR

(a) The distance -time data for a moving car is given below

Time	9.00am	9.30am	10.00am	10.30am	11.00am
Distance(km)	3240	3260	3280	3300	3320

- Plot the Distance -Time graph
 - What is the kind of motion represented by the graph
 - How much distance the car has travelled up to 9.45 AM.
- (b) The odometer of a car reads 57321km when the clock shows the time 8: 30 am. What is the distance moved by the car if at 8:50 am the odometer reading has changed to 57336km. Calculate the speed of the car in km/min and in km/hr.?

CHEMISTRY

SECTION A

[5×1=5]

- Select the odd one out
 (a) Soap (b) Orange (c) Vinegar (d) Curd
- On passing carbon dioxide gas , lime water becomes milky due to the formation of
 (a) Calcium Carbonate (b) Calcium Oxide (c) Calcium hydroxide (d) Calcium
- Contamination of drinking water with sewage water can cause diseases like
 (a) Dysentery (b) Typhoid (c) Cholera (d) All of these
- Mention two environmental importance of forest.
- Define infiltration.

SECTION B

[4×2=8]

6. (a) Explain why rusting of iron articles is faster in coastal areas than in deserts.
(b) Write the chemical equation for rusting of iron.
7. (a) What is canopy?
(b) Why forests are called green lungs?
8. Explain the function of the following
(a) Bar Screens
(b) Scraper
9. (a) Name the product formed when anaerobic bacterial decomposition of sludge takes place.
(b) Mention one use of the product formed.

SECTION C

[3×3=9]

10. (a) Discuss any four harmful effects of deforestation.
(b) Explain how forest prevents flood.
11. There are two solutions 'A' and 'B'. Turmeric solution turns reddish brown in 'A' but remains yellow in 'B'.
(a) What can be the nature of 'B' ?
(b) What will be the colour change of phenolphthalein in 'A'?
(c) Suggest the colour of red litmus paper in 'A'.
(d) State the colour of blue Litmus Paper in 'A'?
12. (a) Define displacement reaction.
(b) Write the chemical formula of the following
i. Baking soda
ii. Acetic acid
iii. Magnesium hydroxide
iv. Magnesium oxide

SECTION D

[1×5=5]

13. (a) Draw a labelled diagram of water table and label groundwater, water table and aquifer.
(b) Name two factors responsible for the depletion of water table. [3+2]

OR

14. (a) Draw a labelled diagram of drip irrigation.
(b) Mention the difference between soft water and hard water. [3+2]

BIOLOGY

I. Multiple Choice Questions (choose and write the correct option)-

1. Choose the correct option to fill the blanks:- [1]
Aquatic animals like fishes excrete cell waste as (i) _____ which directly dissolves in water. Some land animals like birds and snakes excrete a semi-solid white coloured compound called (ii) _____. (iii) _____ is the major excretory product in humans.
(a) (i) ammonia (ii) urea (iii) uric acid
(b) (i) uric acid (ii) urea (iii) ammonia
(c) (i) ammonia (ii) uric acid (iii) urea
(d) (i) urea (ii) uric acid (iii) ammonia

2. Match the following animals in column-I with their adaptations in column -II. [1]

Column -I	Column -II
a) Toucan	i) Modified teeth
b) Siberian cranes	ii) Silver white mane
c) Tusks of elephant	iii) Long beak
d) Macaque	iv) Migration to India during winter

- (a) a) - ii, b) - iv, c) - iii, d) - i
(b) a) - iii, b) - i, c) - iv, d) - ii
(c) a) - i, b) - iv, c) - iii, d) - ii
(d) a) - iii, b) - iv, c) - i, d) - ii

II. Answer in one sentence: - [2x1=2]

3. Why it is difficult to predict the weather of a place while it is easy to predict its climate?
4. Explain the importance of 'humus' that is generally found in the uppermost layer of soil.

III. Short answer type I questions: - [4x2=8]

5. a. 'The insectivorous plants are partial heterotrophs.' Comment on this statement.
b. Give one example of (i) an insectivorous plant (ii) a parasitic plant.
6. Name the parts of the alimentary canal, where
- (a) Water gets absorbed from the ingested food
 - (b) Digested food gets absorbed
 - (c) Taste of food is perceived
 - (d) Bile juice is produced
7. Kidneys are the major excretory organs in humans. Name the process and explain, how the waste products released will be executed out if the kidneys are damaged or unfunctional.
8. The polar regions present an extreme climate. Then how do polar bears living in this region adapt themselves? Mention two points with explanation.

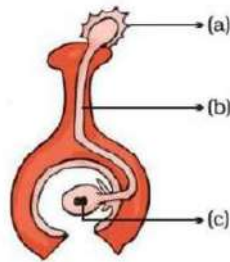
IV. Short answer type II questions: - [3x3=9]

9. (a) Differentiate between breathing and respiration.
(b) Why do we breathe through nose and not through mouth?
(c) Why does lime water turn milky when we blow into it?
10. Give reasons for the following statements: -
- (a) Caterpillars should not be collected with bare hands.
 - (b) The cocoons are kept under the sun or boiled or steamed before reeling the silk.
 - (c) A cotton garment cannot keep us as warm in winter as a woollen sweater does.
11. (a) Mention any two views that enable us to observe the soil profile of that place.
(b) Draw a neat diagram to represent the 'Soil profile' and label the following:
- i. The layer that has a lesser amount of humus but more of minerals.
 - ii. The layer which is made up of small lumps of rocks with cracks and crevices.

V. Very long answer-type questions: -

[1.5+1.5+2=5]

12. (a) In the diagram given below, label the parts marked (a), (b) and (c)



- (b) How does the process of fertilization takes place in flowers? Explain in three proper steps.
(c) How do plants benefit by seed dispersal? Mention two points.

OR

- (a) Draw a neat diagram to show spore formation in fungus and label two parts. [2+1+2=5]
(b) Name two plants that reproduce be means of spores.
(c) Mention one advantage and one disadvantage of vegetative propagation.
-



DELHI PUBLIC SCHOOL

SAIL TOWNSHIP, RANCHI

ANNUAL EXAMINATION (2022-23)

Class - VII
Time - 1 Hour

Subject - General Knowledge
Maximum Marks - 50

- 1) This fish also called moonfish is the only known warm blooded fish-
 - a) Manatee
 - b) Opah
 - c) Dugong
 - d) None
- 2) Which country launched Mangalyaan or MOM into space in September 2014, thus joining a select group of countries to send a spacecraft to the Mars?
 - a) India
 - b) USA
 - c) London
 - d) None
- 3) The Indian- born business executive is the CEO of Google Inc.
 - a) Sundar Pichai
 - b) R R.Martin
 - c) Lionel
 - d) Leonardo di Caprio
- 4) What is the number of bit used by the IPV6 address.
 - a) 32-bit
 - b) 128- bit
 - c) 256- bit
 - d) None
- 5)is known as the silicon valley of India and a hub for IT companies.
 - a) Bengaluru
 - b) Pune
 - c) Kolkata
 - d) None
- 6) Which novel won the 2021 Pulitzer prize for fiction?
 - a) The Night watch
 - b) David Diop
 - c) Dan Brown
 - d) Ishmael

- 7) She launched a charitable organisation BEYGOOD which works for homeless, unemployed and children's charities.
- a) Shabana Azmi
 - b) Oprah Winfrey
 - c) Beyonce
 - d) None
- 8) The ruins of, famous for stone structure built into the rocks.
- a) Petra
 - b) Memphis
 - c) Tikal
 - d) None
- 9) This ancient Greek city got submerged underwater by a tsunami around 373 BC.
- a) Rhodes
 - b) Create
 - c) Helike
 - d) None of the following
- 10) It is located in modern-day Athens on a flat-topped hill, the name of this ancient place means 'a city at the top'
- a) Acropolis
 - b) Jerusalem
 - c) Petra
 - d) None
- 11) He became 'The Godfather of soul'.
- a) James Brown
 - b) Elvis Presley
 - c) IM Rei
 - d) Charles
- 12) A can produce the fastest winds on earth.
- a) Tornado
 - b) Hurricane
 - c) Amphan
 - d) None
- 13) Dry slab is the most dangerous form of an
- a) Avalanche
 - b) Cloudburst
 - c) Earthquake
 - d) None

- 14) On which ship did Francis Drake complete his circumnavigation of the globe?
- a) Golden Hind
 - b) Fiji
 - c) Hawaii
 - d) Tasmania
- 15) He was an English admiral and renowned seaman.
- a) Marco Polo
 - b) Sir Francis Drake
 - c) Sir Walter
 - d) None
- 16) Complete the letter series.
AM,BN,EL,FJ,CO,DP,GK,?
- a) BQ
 - b) OT
 - c) HL
 - d) None
- 17) Venerate : Worship:: Extol: ?
- a) Glorify
 - b) Homage
 - c) Complacent
 - d) All
- 18) If the word TELEVISION is coded as NOISIVELET, how would you code the word INDUSTRY?
- a) JOVETUXZ
 - b) YRTUSDNI
 - c) YRTSUDNI
 - d) None
- 19) This piece has limited movement. Its capture or mate means the end of the game.
- a) King
 - b) Queen
 - c) Pawn
 - d) All
- 20) Tick the correct spelling:-
- a) h y g i e n e
 - b) h y g e i n e
 - c) h y g e n i
 - d) h y g i n e i

- 21) A Motto that is supposed to guide one's action is
- a) Mantra
 - b) Tech- Savy
 - c) Rage
 - d) None
- 22) Which ancient rock fortress in Sri-lanka, is popular for its ancient paintings?
- a) Masada
 - b) Chittorgarh fort
 - c) Sigiriya
 - d) None
- 23) Which is the site of the ruins of the ancient Inca civilization situated in Peru?
- a) Amratian
 - b) Naca
 - c) Machu Picchu
 - d) None
- 24) The happiest place on Earth -
- a) Disney land
 - b) Coca-Cola
 - c) Mc Donald's
 - d) Adidas
- 25) This is the first newspaper in India to have a website which was launched in 1995..
- a) The Hindu
 - b) The Pioneer
 - c) Kesari
 - d) The statesman
- 26) In which country is The Wayang Puppet Theatre practiced in the royal courts of Java and Bali for centuries.
- a) Indonesia
 - b) Paris
 - c) India
 - d) None
- 27) In which present- day state of India is Kalinga located?
- a) West Bengal
 - b) Bihar
 - c) Odisha
 - d) None of the following
- 28) A bird in the hand is worth two in the; better to be happy with things you have rather than risk everything to get more.
- a) Cage
 - b) Bush
 - c) Sky
 - d) None

- 29) The principle of investment says that, to reduce risk, you should never put all your eggs in one.....
- a) Box
 - b) Basket
 - c) Omelette
 - d) None
- 30) This plant, grown widely in the Mediterranean region, has given us the word 'Oil'
- a) Olives
 - b) Wheat
 - c) Coffee
 - d) Grape
- 31) Rahul told Mini:
"your mother's husband's only sibling is my aunt!" How is Mini related to Rahul?
- a) Sister
 - b) Brother
 - c) Sister in law
 - d) None
- 32) On his farm, a farmer has 80 animals: some goats and some chickens. The total number of animal legs is 200. How many chickens are there?
- a) 20
 - b) 60
 - c) 80
 - d) None
- 33) There are five kinds of trees. The coconut tree is taller than the mango tree but not as tall as the eucalyptus tree. The banana tree is taller than the lemon tree but shorter than the mango tree. Which tree is the tallest?
- a) Coconut
 - b) Eucalyptus
 - c) Mango
 - d) Banana
- 34) According to a cryptic code, if LIFE is written as 3456 and GIVEN is written as 74069, how would you write FEELING?
- a) 5663497
 - b) 563497
 - c) 5553296
 - d) None
- 35) Find the odd one out:
- a) DINAR
 - b) RIAL
 - c) DIRHAM
 - d) LIMA

- 36) The square root of 1764 is ..
- a) 42
 - b) 40
 - c) 36
 - d) None
- 37) Gandhiji always said that is next to godliness.
- a) Timeliness
 - b) Cleanliness
 - c) Holiness
 - d) None
- 38) Nigeria and India are the two leading producers of this important food grain, also called durra and milo.
- a) Sorghum
 - b) Wheat
 - c) Maize
 - d) Oats
- 39)annoys you.
- a) The lion's share
 - b) Gets my goat
 - c) Pig he added
 - d) Elephant in the room
- 40) when you don't understand anything.
- a) It's all greek to me
 - b) Talk for England
 - c) To go Dutch
 - d) Slow boat
- 41) was a part of ancient India,now is a part of Pakistan.
- a) Mohenjodaro
 - b) Harappa
 - c) Tikal
 - d) Thobes
- 42) This ancient city, called the was once the capital of Egypt.
- a) Memphis
 - b) Harappa
 - c) Petra
 - d) None
- 43) is also called as cabbage coral.
- a) Sun Coral
 - b) Leaf Coral
 - c) Fox Coral
 - d) Sea Coral

- 44) Who is a veteran?
a) Retired Soldier
b) Struggling Soldier
c) Fighting Soldier
d) None
- 45) is the largest country in the Middle East.
a) Bahrain
b) Saudi Arabia
c) UAE
d) Israel
- 46) Which of the following is used for the formation of holograms?
a) X-ray
b) Visible light
c) lasers
d) Area
- 47) ACER= Acquisition Experimentation Reflection.
a) Cold
b) Collaboration
c) Code
d) Common
- 48) If the code for 'CENTER' is '3-E-14-T-5-R', then '7-R-15-U-16' will be the code for?
a) GROUP
b) AMAZING
c) SPIRAL
d) BOOST
- 49) Ram is older than Shyam.
Sita is older than Ram.
Shyam is older than Sita.
If the first two statements are correct, then the third statement is..
a) True
b) False
c) Uncertain
d) None
- 50) Arrange the following words in a meaningful sequence.
1) Education
2) Birth
3) Marriage
4) Job
5) Death
6) Child
a) 2,1,3,6,4,5
b) 2,1,4,3,6,5
c) 2,4,6,5,3,1
d) 2,1,3,4,6,5



DELHI PUBLIC SCHOOL

SAIL TOWNSHIP, RANCHI

ANNUAL EXAMINATION (2022-23)

Class - VII
Time - 1 Hour

Subject - Health and Physical Education
Maximum Marks- 50

General Instructions

1. The question paper consist of 50 multiple choice questions.
 2. All questions are compulsory.
 3. All questions carrying one mark (1X50 = 50)
-

1. Which country has won maximum times world cup in football ?

- (a) Brazil
- (b) Italy
- (c) Germany
- (d) USA

2. What is the weight of a football?

- (a) 390-411gm
- (b) 350-410gm
- (c) 410-450gm
- (d) 444-510gm

3. Which postural deformity is not related with spinal curve

- (a) Kyphosis
- (b) Scoliosis
- (c) Lordosis
- (d) Flat foot

4. Flat foot and round shoulders are deformities associated with :

- (a) Skeletal system
- (b) Reproductive system
- (c) Respiratory system
- (d) Nervous system

5. Who won Golden Boot in FIFA World cup 2022?

- (a) Leonel Messi
- (b) Kylian Mbappe
- (c) Cristiano Ronaldo
- (d) Luka Modric

6. Which of the following is not a movement speed :

- (a) Boxing
- (b) Wrestling
- (c) Karate
- (d) Yoga

7. What are the causes of knock-knee ?
- (a) Weakness of muscle and ligaments
 - (b) Use of poor quality of footwear
 - (c) Carrying heavy load on shoulders
 - (d) Putting extra weight on leg muscles
8. Speed is equal to:
- (a) Velocity/speed
 - (b) Distance/time
 - (c) Distance/velocity
 - (d) Velocity/time
9. How to manage stress ?
- (a) Having positive attitude
 - (b) Taking alcohol
 - (c) Fighting to others
 - (d) Being aggressive
10. In sports training , limbering down is done _____
- (a) After competition
 - (b) Before Competiton
 - (c) During Competiton
 - (d) Never
11. What is the distance between the post and height of the post in football?
- (a) 8.40mt length and 1.88mt height
 - (b) 7.32mt length and 2.44mt height
 - (c) 9.32mt length and 3.10mt height
 - (d) 7.44mt length and 2.80mt height
12. How many penalties are usually taken in a penalty shootout ?
- (a) 01
 - (b) 05
 - (c) 03
 - (d) 10
13. Who won the T-20 worldcup 2022 ?
- (a) India
 - (b) Sri lanka
 - (c) Pakistan
 - (d) England
14. Who is the present coach of Indian Cricket team ?
- (a) Mahendra Singh Dhoni
 - (b) Ravi Shastri
 - (c) Rahul Dravid
 - (d) Sunil Gavaskar
15. What is the length and width of the football field for senior ?
- (a) 95mt long and 60mt wide
 - (b) 105mt long and 68mt wide
 - (c) 106mt long and 95mt wide
 - (d) 111mt long and 81mt wide

16. What are the corrective measures for Scoliosis :
- (a) Perform Trikonasana
 - (b) Walk on heels
 - (c) Both A and D
 - (d) Lie down in prone position
17. Who won the 2023 Australian open women tennis championship :
- (a) Ash Barty
 - (b) Elena Rybakina
 - (c) Aryna Sabalenka
 - (d) Serena Williams
18. Which country won the FIFA Worldcup 2022 ?
- (a) Germany
 - (b) Brazil
 - (c) France
 - (d) Argentina
19. Who won the mens Singles title in US Open 2022 ?
- (a) Casper Rudal
 - (b) Carlos Aleazaz
 - (c) Novak Djoovic
 - (d) Nick Kyrgios
20. Which state organised 2023 mens Hockey world cup ?
- (a) Punjab
 - (b) Jharkhand
 - (c) Uttar Pradesh
 - (d) Odisha
21. Which country won the Hockey men world cup 2023 ?
- (a) Belgium
 - (b) India
 - (c) Austrilia
 - (d) Germany
22. The distance of penalty area from the goal line ?
- (a) 11mt
 - (b) 12mt
 - (c) 15mt
 - (d) 21mt
23. Lordosis most often effects which part of the spine?
- (a) Lumber
 - (b) Cervical
 - (c) Thoracic
 - (d) None od the above
24. Symptoms of stress _____
- (a) Nervous
 - (b) Panicking
 - (c) Anxious
 - (d) All of the above

25. The ability to move from one place to another in shortest period of time :

- (a) Power
- (b) Ability
- (c) Speed
- (d) Balance

26. Which Country hosted the 2022 FIFA World cup?

- (a) Brazil
- (b) Italy
- (c) Qatar
- (d) Argentina

27. In football match half time takes place after _____ minutes ?

- (a) 48minutes
- (b) 50minutes
- (c) 45minutes
- (d) 60minutes

28. Which yogic asana is beneficial for relaxation ?

- (a) Bhujangasana
- (b) Chakrasana
- (c) Vajrasana
- (d) Shavasana

29. Who won the Golden ball in FIFA world cup 2022?

- (a) Kylian Mbappe
- (b) Cristiano Rolando
- (c) Lionel Messi
- (d) Robert Lewandowski

30. Who won the Austrilian open men's Tennis Championship 2023 ?

- (a) Rafel Nadal
- (b) Daniil Medvedev
- (c) Novack Djokovic
- (d) Casper Rudd

31. Who is the captain of Indian hockey team (Mens) ?

- (a) Manpreet Singh
- (b) Harvinder Singh
- (c) Julian Khalxo
- (d) Ravindra Singh

32. How many Playing members are there in a football team ?

- (a) 12
- (b) 11
- (c) 15
- (d) 08

33. Which day is celebrated as International Yoga Day ?

- (a) June 21st
- (b) June 16th
- (c) June 14th
- (d) November 15th

34. FIFA is the global regulatory body of which sport ?
- (a) Cricket
 - (b) Football
 - (c) Hockey
 - (d) Volley Ball
35. Who won the under 19 women's T20 World cup Cricket 2023 ?
- (a) Australia
 - (b) England
 - (c) Sri Lanka
 - (d) India
36. Which of following is the characteristics of Positive Stress:
- (a) It feels exciting
 - (b) It improves performance
 - (c) It motivates
 - (d) All the above
37. What is the duration of football match ?
- (a) 30minutes
 - (b) 45minutes
 - (c) 60minutes
 - (d) 90minutes
38. Abnormal curve of the spine towards front Is called :
- (a) Scoliosis
 - (b) Kyphosis
 - (c) Lordosis
 - (d) Psoriasis
39. In flat foot the second toe is deviated towards which toe?
- (a) Greater Toe
 - (b) Middle Toe
 - (c) Both (a) and (b)
 - (d) None of the above
40. Reaction ability is the ability to react _____ and _____.
- (a) Slow and steady
 - (b) Effectively and quickly
 - (c) Coordinating and quickly
 - (d) Fast and quickly
41. _____ is the ability of muscle or body to overcome resistance under the condition of fatigue:
- (a) Endurance
 - (b) Speed
 - (c) Agility
 - (d) None of the above
42. What can reduce stress?
- (a) Doing continuous work
 - (b) Doing meditation
 - (c) Over-eating
 - (d) Being worried

43. Which of the following is the example of acceleration ability ?
- (a) Cricket
 - (b) Tennis
 - (c) Juggling
 - (d) Sprint ,races
44. Which Countries will host the 2026 FIFA World cup ?
- (a) Abu Dhabi , Dubai
 - (b) France and Germany
 - (c) USA , Canada and Mexico
 - (d) India , Pakistan and Nepal
45. The official Mascot is of FIFA world cup 2022 at Qatar was :
- (a) La'eeb
 - (b) Perry
 - (c) Goldic
 - (d) Kenyo
46. _____ flexibility helps to perform stretching exercises without the help of a partner:
- (a) Passive flexibility
 - (b) Stable flexibility
 - (c) Active flexibility
 - (d) Continuous flexibility
47. Which one is the example of anxiety
- (a) Normal Blood Pressure
 - (b) Leg pain
 - (c) Sneezing
 - (d) Fast heart beat
48. Which Indian cricketer scored double century in ODI vs Newzealand?
- (a) Sachin Tendulkar
 - (b) Shubman Gill
 - (c) Hardik Pandya
 - (d) Rohit Sharma
49. Which Indian cricketer scored double century in ODI vs Newzealand?
- (a) Sachin Tendulkar
 - (b) Shubman Gill
 - (c) Hardik Pandya
 - (d) Rohit Sharma
50. What causes physical,emotional and psychological strain?
- (a) happiness
 - (b) stress
 - (c) bad mood
 - (d) hunnger



DELHI PUBLIC SCHOOL
SAIL TOWNSHIP, RANCHI
ANNUAL EXAMINATION (2022-23)

Class - VII
Time - 1 Hour

Subject - Computer Science
Maximum Marks- 50

1. Fill in the blanks: [1x5=5]

- a. is the coding that constitutes the core of OS.
- b.signify the behavior of the field.
- c.is a free file storage service from Google.
- d. block helps in the movement of a Sprite.
- e. are used to present the result in meaningful form.

2. Select the most suitable alternative: [1x5=5]

- a. The programming blocks in Scratch are of _____ shapes:
 - i. Six
 - ii. Five
 - iii. Four
 - iv. Three
- b. Which of the following was launched on April 24, 2012?
 - i. Digilocker
 - ii. Apache
 - iii. Google drive
 - iv. All of these
- c. A Table is made of:
 - i. Rows and Columns
 - ii. Columns
 - iii. Rows and Records
 - iv. Records
- d. To create report by using Wizard, user can click on the option:
 - i. Report Wizard
 - ii. Report Design
 - iii. Blank Report
 - iv. Query
- e. Linux was created by:
 - i. Linux Torvalds
 - ii. Liana Torvalds
 - iii. Linus Torvalds
 - iv. Tux

3. Write steps :

- a. How can you set the primary key in a table? [2]
"OR"

Write down the steps to sort the records.

- b. Write down the steps to change the backdrop. [2]

4. Write short notes: [2x4=8]

- a. Digilocker b. Cloud Computing c. Operating System d. DBMS

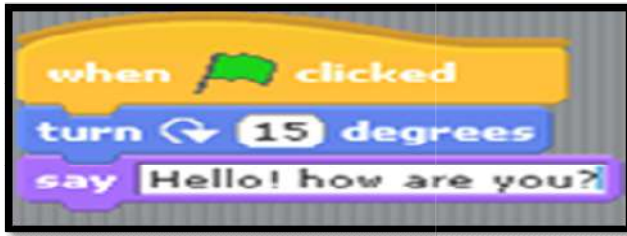
5. Differentiate between: [2x3=6]

- a. Looks and Sensing block
- b. Field and Record
- c. Sorting and Filtering

6. Write the Output/Blocks:

[1x2=2]

- a. Rajesh wants to move the sprite 90 steps backward and turn it by 35 degree. He also wants to repeat it 10 times. Which programming blocks can be used by him?
- b. What will be the output of the following?



7. Short Answer Questions:

[1x2=2]

- a. What is referred as unique key in a table?
- b. Which freeware animation software can create picture stories?

8. Answer the following questions:

[2x7=14]

- a. Write two features of DBMS.
- b. Define (i)Sprite and (ii) Stop button.
- c. List few functions of operating system.
- d. Explain about any two tools which are used to draw shapes in Scratch.
- e. What do you mean by 'Relationship' in context to database?
- f. Explain any two data types used in database package.

“OR”

- Describe about two advantages of cloud computing
- g. Mention few distributions of Linux.

9. Write 'True' or 'False':

[1x4=4]

- a. All the blocks in Scratch are of same colour. []
- b. The field name cannot be displayed in the label boxes. []
- c. In DBMS, Field name-Student_Name belongs to Field type-Date. []
- d. Hide command makes sprite disappear from the stage.[]

“OR”

Name a freeware for each of the following application: (OPTIONAL)

[1x4=4]

- | Generic Terms | Freeware |
|-------------------------|----------|
| a. Word Processor | |
| b. Calculator | |
| c. Spreadsheet Package | |
| d. Presentation Package | |



DELHI PUBLIC SCHOOL
SAIL TOWNSHIP, RANCHI
ANNUAL EXAMINATION (2022-23)

Class - VII
Time - 90 Minutes

Subject - French
Maximum Marks - 40

SECTION - A
Reading (5 M)

1. Lisez le texte et répondez aux questions.

Bonjour, je m'appelle Hélène. Ma maison est très grande et belle. Il y a deux étages. Ma chambre est au premier étage. Au rez de chaussée, il y a un salon, une cuisine, une salle à manger et une salle de bain. Dans le salon, il y a un divan, un fauteuil, un tapis, une lampe et une poste de radio. Ma chambre est petite avec un lit, un bureau et une armoire. Il y a un petit jardin devant. J'adore ma maison.

1) Répondez :

[5]

- I. Il ya combien d'étages dans la maison ?
- II. Quels sont les meubles du salon ?
- III. Quest-ce qu'il ya dans la chambre d'Helene?
- IV. Où est le jardin ?
- V. Hélène chambre est au quelle étage ?

SECTION - B

Writing (5M)

1. c'est votre anniversaire. Écrivez une invitation pour vos amis. (30-35 words)

Ou



Décrivez cette image en 30-35 mots

(Monument, haut, belle, construite par gustave Eiffel, paris,)

SECTION - C

Grammer (25 M)

1. Conjuguez les verbes : [5]
 - I. Mon père _____ (se promener)
 - II. Elles _____ (se lever)
 - III. Nous _____ (mentir)
 - IV. Nous _____ (prendre)
 - V. Ils _____ (faire)
2. Mettez les phrases à l'interrogatif. [5]
 - I. Tu fais du travail. (II)
 - II. Paul habite en france. (III)
 - III. Ils commencent la classe . (II)
 - IV. Il mange beacoupe de bonbons. (III)
 - V. Vous aimez chanter (I)
3. Completez en utilisant les prépositions. [2½]
 - I. Il est _____ zaire.
 - II. Nous allons _____ pays- bas
 - III. Ma cousine va _____ Londres.
 - IV. Il arrive _____ Athènes _____ Grèce.
4. Mettez les phrases à la forme négative: [5]
 - I. Je parle français dans mon bureau.
 - II. Il a des robes noires.
 - III. Ce sont des professeurs.
 - IV. Les étudiants ont des stylos.
 - V. Elle boit du jus de pomme.
5. Mettez les verbes à l'impératif . [2½]
 - I. Aller au cinéma (Tu)
 - II. Faire les devoirs (tu)
 - III. Finir les travaux (nous)
 - IV. Manger des fruits (tu)
 - V. Se coucher tôt (tu)
6. Completez avec démonstratif adjectifs : [2½]
 - I. _____ robe est belle.
 - II. _____ livre est épais
 - III. _____ maison est belle.
 - IV. _____ stylo est rouge.
 - V. _____ fille est belle.

7. Transduisez en anglais :

[2½]

- I. Elle est belle.
- II. Tu es grand.
- III. Nous parlons français.
- IV. Elle étudie en dps Ranchi.
- V. J'habite à ranchi.

SECTION - D

Culture and civilization

Répondez aux questions suivantes :

[5]

- 1) Nommez deux villes français.
 - 2) Nommez deux magasin français.
 - 3) En quelle jours nous célèbre fête de rois ?
 - 4) En quelle date nous célèbre paques?
 - 5) Nommez deux montagne français.
-



DELHI PUBLIC SCHOOL

SAIL TOWNSHIP, RANCHI

ANNUAL EXAMINATION (2022-23)

Class - VII
Time - 90 Mintues

Subject - German
Maximum Marks- 40

1.	<p>Lies den Text:</p> <p>Ich bin Karin. Nächste Woche habe ich Mein Geburtstag. Ich werde 16 am 12 Februar (Sonntag). Ich möchte eine Party geben und alle meine Schulfreunde einladen. Wir Kaufen eine Geburtstagstorte in der Bäckerei. Meine Mutter und Schwester kochen leckere Sachen. Ich möchte Geburtstag mit meiner Familie und Freunde feiern. Mein Vater ist ganz beschäftigt heut zu tage. Aber Er hat mir gesagt, dass ich versuchen zu Kommen. Er Wohnt in Delhi. Die Party beginnt um 18:00 Uhr in meinen Garten. Ich und Meine Freunde wollen Viel Spaß haben und tanzen. Um 21:00 Uhr essen wir Abend zusammen. Nach dem Essen endet die Party um 21 Uhr.</p> <p>A. Richtig oderFalsch!</p> <p>a) Karin will nicht ihre Freunde zum Geburtstag einladen.</p> <p>b) Karin kauft Geburtstagstorte im Supermarket.</p> <p>c) Karin hat Geburtstag am Sonntag.</p> <p>d) Ihr Vater Kommt zur Party.</p> <p>e) Sie feiert die Party in eine Wohnung.</p> <p>B. Antwort die fragen:</p> <p>a. Wann ist der Geburtstag von Karin?</p> <p>b. Wann beginnt die Party?</p> <p>c. Was machen die Freunde?</p> <p>d. Wann endet die Party?</p> <p>e. Wer kocht leckere Sachen?</p>	<p>15x5=5</p> <p>1x5=5</p>
2.	<p>Schreib die Jahre in Zahlen!</p> <p>i) neunzehnhundertsiebenundvierzig</p> <p>ii) Vierzehnhundertachtundneunzig</p> <p>iii) zweitausendzwanzig</p> <p>iv) neunzehnhundertneunundachtzig</p> <p>v) achtzehnhundertsiebenundfünfzig.</p>	<p>.5x5=2.5</p>

3.	<p>Bilde Sätze!</p> <p>a) wir / nach / Juni / fahren / Deutschland / im</p> <p>b) In / du / Wohin / Urlaub / fährst?</p> <p>c) Ich / mein Freund / ins Kino / und / wollen / gehen</p> <p>d) Ist / Wie /das/ heute / Wetter?</p> <p>e) Lukas / Deutsch / lernen / will.</p>	1x5=5												
4.	<p>Wie spät ist es?</p> <p>i) Viertel nach zehn</p> <p>ii) halb eins</p> <p>iii) Viertel vor elf</p> <p>iv) fünf vor halb vier</p> <p>v) zehn nach drei.</p>	.5x5=2.5												
5.	<p>Ergänze: - Modal Verben (Wollen/ können)</p> <p>1) Klaus _____ schwimmen lernen. Also geht er ins Schwimmbad.</p> <p>2) Eva _____ gut Ski fahren.</p> <p>3) Ich _____ Deutsch und Englisch sprechen.</p> <p>4) Du _____ nicht Gitarre spielen? Nein, ich habe Keine Lust.</p> <p>5) Heute Abend _____ wir ins Kino gehen.</p>	.5x5=2.5												
6.	<p>Was passt zusammen?</p> <table border="1" data-bbox="305 1388 1198 1967"> <tr> <td data-bbox="305 1388 753 1503">1) Finn will Deutsch lernen.</td> <td data-bbox="753 1388 1198 1503">a) Dann besuchst du ein Schwimmkurs.</td> </tr> <tr> <td data-bbox="305 1503 753 1583">2) Was isst du in der Pause?</td> <td data-bbox="753 1503 1198 1583">b) Ja, das ist dein Geschenk.</td> </tr> <tr> <td data-bbox="305 1583 753 1698">3) Ich will schwimmen lernen.</td> <td data-bbox="753 1583 1198 1698">c)Alles Gute zum Geburtstag im Voraus.</td> </tr> <tr> <td data-bbox="305 1698 753 1814">4) Ist das mein Geschenk?</td> <td data-bbox="753 1698 1198 1814">d) Er soll ein Deutsch Kurs besuchen.</td> </tr> <tr> <td data-bbox="305 1814 753 1894">5) Ich werde nächste Woche 15.</td> <td data-bbox="753 1814 1198 1894">e) Ich esse einen Schokoriegel.</td> </tr> <tr> <td data-bbox="305 1894 753 1967"></td> <td data-bbox="753 1894 1198 1967"></td> </tr> </table>	1) Finn will Deutsch lernen.	a) Dann besuchst du ein Schwimmkurs.	2) Was isst du in der Pause?	b) Ja, das ist dein Geschenk.	3) Ich will schwimmen lernen.	c)Alles Gute zum Geburtstag im Voraus.	4) Ist das mein Geschenk?	d) Er soll ein Deutsch Kurs besuchen.	5) Ich werde nächste Woche 15.	e) Ich esse einen Schokoriegel.			.5x5=2.5
1) Finn will Deutsch lernen.	a) Dann besuchst du ein Schwimmkurs.													
2) Was isst du in der Pause?	b) Ja, das ist dein Geschenk.													
3) Ich will schwimmen lernen.	c)Alles Gute zum Geburtstag im Voraus.													
4) Ist das mein Geschenk?	d) Er soll ein Deutsch Kurs besuchen.													
5) Ich werde nächste Woche 15.	e) Ich esse einen Schokoriegel.													

7.	<p>Schreib die Sternzeichen. (was passt zusammen)</p> <p>i) Wage a) Capriconus ii) Schütze b) Scorpio iii) Widder c) Capriconus iv) Steinbock d) Libra v) Skorpion e) Aries</p>	.5x5=2.5
8.	<p>Schreib trennbaren Verb in die richtigen Sätze:</p> <p>a) Ich _____ Meine Freunde _____. (einladen) b) Mein Freund _____ die CDS _____. (mitbringen) c) Ich _____ jeden Morgen Um 6 Uhr _____. (aufstehen) d) Meine Mutter _____ ein Geschenk für mich _____. (einkaufen) e) Ich _____ Jeden Tag _____. (fernsehen)</p>	.5x5=2.5
9.	<p>Lies die folgende E-Mail und Schreib eine Antwort:</p> <p>Hallo Lukas,</p> <p>Ich bin Martha aus Frankfurt. Ich bin 13. Meine Schule heißt Goethe-Gymnasium und ich besuche die Klasse 7C. Ich gehe nicht so gern zur Schule... Herr Krause, mein Deutschlehrer, ist wirklich sehr autoritär. Aber Frau Becker, die Englischlehrerin, ist sehr sympathisch. Ich mag Englisch. Ich spiele gern Klarinette, ich liebe Musik! Viel Zeit zum Fernsehen habe ich nicht. Ich sehe nur eine Stunde pro Tag fern. Und du? Schreibst du mir?</p> <p>Viele Grüße</p> <p>Martha</p> <p>Antwort die folgende Fragen in E-Mail:</p> <ul style="list-style-type: none"> • Wie heißt deine Schule? • Gehst du gern Schule? • Wie viel Uhr pro Tag siehst du fern? • Welche Fächer magst du sehr? 	5
10.	<p>Ergänze die Possessiv Artikel (ihr/e, sein/e)</p> <p>1) Markus _____ seine Tennisschuhe. 2) Tina findet _____ Rock nicht. 3) Martina hat ein schönes Fahrrad. _____ Fahrrad ist ganz neu. 4) Stefan findet _____ Jeans nicht. 5) Steffi sucht _____ Deutsch Buch.</p>	1x5=5

--	--	--



DELHI PUBLIC SCHOOL
SAIL TOWNSHIP, RANCHI
ANNUAL EXAMINATION (2022-23)

Class - VII
Time - 90 Minutes

Subject - Japanese
Maximum Marks- 40

1. Write any two of the following Hiragana words in Katakana. [2]
- 1) ぼどみんとん
 - 2) いやりんぐ
 - 3) さんぐらす
 - 4) あくせさりー
2. Write the given places in Katakana. [2]
- 1) America
 - 2) Brazil
3. Answer any three questions in Japanese (Hiragana / Katakana). [3]
- 1) なんねんせいですか？
 - 2) なんさいですか？
 - 3) どこにすんでいますか。
 - 4) たんじょうびはいつですか。
4. Change any four of the following verbs in the form given below. [4]

Verb	Present/Future Polite	Plain Past	Past Polite
たべる			
みる			
きる			
のる			
いく			

5. Translate the following conversation between friends. [3]

きのうのアニメみた？

みたよ。おもしろかった。

あのアニメのえいがのDVDをもっているよ。いっしょにみる？

みる！にちようび、いえにいくね。

6. Write your friend's name in Katakana. [1]

1) ともだちのなまえは _____ です。

7. Rearrange any four of the given jumbled words and make meaningful sentences. [4]

1) えんそく / で / に / タージマハル / 이었습니다 / 。

2) でんしゃ / から / デリー / 2じかん / で / かかりました / 。

3) のりました / から / バス / に / えき / 。

4) ととても / でした / おしろ / きれいな / 。

5) みんなとしゃしん / で / タージマハルのまえ / を / とりました / 。

8. Write any four of the following sentences in Japanese(Hiragana/Katakana). [4]

1) I am listening to the speech.

2) I have a bicycle.

3) Will it rain tomorrow?

4) What time is it?

5) I get up at 5 o'clock in the morning.

9. Answer the following questions based on the hints given in the bracket. [5]

1) どんなバッグですか？ (あかい / あたらしい)

2) どんなへやですか？ (ひろい / きれい)

3) りかのせんせいはどんなせんせいですか？ (せがたかい / やさしい)

4) どんないぬをさがしていますか？ (ちいさい / しろい)

5) どんなカメラがほしいですか？ (やすい / かるい)

10. Make a single sentence by using [~たり~たりします] to combine the following two sentences. [3]

1) えいがをみます + おんがくをききます

2) てがみをかきます + ほんをよみます

3) ともだちにあいます + かぞくにでんわします

11. Write a paragraph on a given topic below. Write a minimum of four sentences in Japanese.

[4]

“My birthday”

Or

“My School”

12. Read the given conversation and answer the questions.

[5]

ひらべえ： あれ、たかのさんなにをつくっているんですか？

たかの： パンケーキをつくっています。

ひらべえ： わあー、おいしそうですね。

たかの： ありがとうございます。

むすこがパンケーキがすきなのでよくつくります。

ひらべえ： いいなあー。ぼくも1まいたべたいです。

たかの： はい、じゃあこれをどうぞ。

つくったあとはかたくなりますから、ラップにつつんでいます。

ひらべえ： わーい。うれしいなあ。

きょうはかようびなので、すいえいのじゅぎょうがあります。

じゅぎょうがおわってから、たかのさんにもらったパンケーキをたべます。

たかの： あ、そうなんですね。

きょうは2じごろからあつくなるそうなので、

プールきもちよさそうですね。

がんばってください！パンケーキのかんそうもきかせてくださいね。

ひらべえ： はい！ではいってきます！

- 1) たかのさんのむすこはなにがすきですか？
- 2) ひらべえはなんまいパンケーキをもらいましたか？すうじでかきましょう。
- 3) たかのさんはなにでパンケーキをつつんでいましたか？カタカナでかきましょう。
- 4) ひらべえのすいえいのじゅぎょうはなんようびにありますか？ひらがなでこたえましょう。
- 5) きょうはなんじごろからあつくなるとたかのさんはいっていますか？



DELHI PUBLIC SCHOOL

SAIL TOWNSHIP, RANCHI

ANNUAL EXAMINATION (2022-23)

Class - VII
Time - 90 Minutes

Subject - Spanish
Maximum Marks- 40

Write answers in complete sentences along with questions. If answered in a word, full marks will not be given.

1. Responde a las preguntas siguientes de Empezamos : [10]

- ¿Dónde vas a ir de vacaciones este verano?
- ¿Cómo vas a ir, en coche o en tren?
- ¿Con quién vas a ir de vacaciones?
- ¿Qué has desayunado esta mañana?
- ¿Qué habéis estudiado hoy en clase?
- ¿Por qué está nervioso César?
- ¿Por qué Miguel es el mejor amigo de Sol?
- ¿Quién es tu mejor amigo/a? Descríbelo en dos frases.
- ¿Qué desayunaste ayer?
- ¿Qué escribiste ayer?

2. Presentate en diez frases [5]

3. Completa las frases con el verbo en pretérito perfecto [2]

- ¿Qué (hacer,tú) hoy?
- Hoy (poner, nosotros) las fotos de animales en el mural de la clase.
- Elsa y tú (estudiar) mucho este mes y vais a sacar buenas notas
- ¿..... (dormir,tú) bien esta noche?

4. Qué significan las palabras de pronombres interrogativos en inglés? [2]

- ¿Cómo?
- ¿Qué?
- ¿Cuándo?
- ¿Quién?
- ¿por qué?
- ¿Dónde?
- ¿Cuánto?

5. Llena los huecos con la forma correcta del **pretérito indefinido** [2]
- Carmen (perder) el bolso anteayer.
 - Alberto y yo (Ir, nosotros) a visitar a su familia en su país.
 - El verano pasado mis padres (pasar) las vacaciones en España.
 - El año pasado en México.....(yo, conocer) a un pintor muy interesante
6. Llena los huecos con la conjugación de **Ser o Ir en pretérito indefinido** : [2]
- Ellas las ganadoras del torneo ayer.
 - yo al parque con Marcial ayer por la tarde.
 - Él un médico en aquel hospital hasta 2011.
 - Tú a Madrid en avión la semana pasada.
7. Haz frases con **ayer, el año pasado, en 2020, hace un año.** [2]
8. **Contesta según adverbios de frecuencia** [2]
(Casi siempre, normalmente, casi nunca, a veces)
- ¿Escribes cada día?
 - ¿Qué haces los domingos?
 - ¿Limpias la cocina?
 - ¿Pones y recoges la mesa?
9. **Contesta a las preguntas que cómo sirven los objetos:** [2]
- ¿Para qué sirve la escuela?
 - ¿Para qué se usa la fregona?
 - ¿Para qué es la nevera?
 - ¿Para qué se usa el lápiz?
10. **Completa las frases con 'tener o tener que' :** [2]
- Yo (tener) un coche.
 - Yo (tener que) terminar todos los ejercicios.
 - Julia (tener) más juguetes que Maria.
 - Nosotros (tener que) estudiar mucho.
11. **Escribe frases que expresen obligaciones:** [2]
- Cama -
 - Ropa -
 - Suelo -
 - Aspiradora -
12. **Completa con la forma correcta del pronombre:** [2]
- Ellos han empezado a bailar sin (tú).
 - Tú hablas (con+yo) por teléfono.
 - Estamos esperando por (Susana).
 - Aquellos regalos son para (Miguel).
13. **Escribe conjugación de los verbos siguientes:** [5]
Hablar, aprender (present perfect tense)
Trabajar, conocer, escribir (simple past tense)



DELHI PUBLIC SCHOOL

SAIL TOWNSHIP, RANCHI

ANNUAL EXAMINATION (2022-23)

Class - VII
Time - 90 Minutes

Subject - Sanskrit
Maximum Marks- 40

खण्ड – क

1. अधोलिखितम् गद्यांशं पठित्वा प्रश्नानाम् उत्तराणि लिखत :-

कस्मिंश्चित् कानने भासुरकः नामकः सिंहः प्रतिवसति स्म। सः स्वाभावेन क्रूरः आसीत्। प्रतिदिनं सः लीलया एकाधिकपयन् अमारयत्। तस्मात् कारणात् सर्वे वन्यजन्तवः भयभीताः खिन्नाः चिन्तिताः च आसन्।

(क) एकपदेन उत्तरत :-

(1/2X2=1)

(i) सिंहस्य किं नाम आसीत्?

(ii) सः स्वाभावेन कीदृशः आसीत्?

(ख) एकवाक्येन उत्तरत :-

(1X1=1)

(i) 'सर्वे वन्यजन्तवः कीदृशाः आसन्'?

(ग) विकल्पेभ्यः उचितं उत्तरं चिनुत :-

(1/2X4=2)

(i) 'सर्वे वन्यजन्तवः भयभीताः आसन्' – इति वाक्ये कर्तृपदं किम्?

(क) वन्यजन्तवः (ख) सर्वे (ग) भयभीताः (घ) आसन्

(ii) 'वने' इति पदस्य किं पर्यायपदं अत्र प्रयुक्तम्?

(क) लीलया (ख) खिन्नाः (ग) कानने (घ) सर्वे

(iii) 'सः स्वाभावेन क्रूरः आसीत्' – इति वाक्ये विशेषणपदं किम्?

(क) सः (ख) क्रूरः (ग) आसीत् (घ) स्वभावेन

(iv) 'आसीत्' इति पदे कः लकारः?

(क) लट् (ख) लृट् (ग) लङ् (घ) लोट्

2. पद्यांशं पठित्वा प्रश्नानाम् उत्तराणि लिखत :-

प्रियवाक्यप्रदानेन सर्वे तुष्यन्ति जन्तवः
तस्मात् प्रियं हि वक्तव्यम् वचने का दरिद्रता।।

I. एकपदेन उत्तरत –

(1/2X2=1)

(i) सर्वे जन्तवः केन तुष्यन्ति?

(ii) तस्मात् किं वक्तव्यम्?

II. एकवाक्येन उत्तरत –

(1X1=1)

(i) के प्रियवाक्यप्रदानेन तुष्यन्ति?

III. विक्लपेभ्यः उचितं उत्तरं चिनुत –

(1/2X4=2)

(i) 'सर्वे तुष्यन्ति जन्तवः' – इति वाक्ये क्रियापदं किम्?

(क) सर्वे (ख) जन्तवः (ग) तुष्यन्ति (घ) तस्मात्

(ii) 'कथने' इति पदस्य किं पर्यायपदं अत्र प्रयुक्तम्?

(क) दरिद्रता (ख) वचने (ग) प्रियम् (घ) हि

(iii) 'अप्रियं' इति पदस्य किं विलोमपदं अत्र प्रयुक्तम्?

(क) तुष्यन्ति (ख) वक्तव्यम् (ग) वचने (घ) प्रियम्

(iv) 'प्रियवाक्यप्रदानेन' इति पदे का विभक्तिः?

(क) तृतीया (ख) चतुर्थी (ग) पंचमी (घ) षष्ठी

खण्ड – क

3. मंजूषातः पदानि चित्वा रिक्तस्थानानि पूरयत :-

(1/2X4=2)

सह, शीघ्रं, स्वभावेन, समीपम्

(i) कार्यं ----- कुरु।

(ii) सा बालिका ----- कुटिला अस्ति।

(iii) तडागस्य ----- एकः वृक्षः अस्ति।

(iv) बालिका मात्रा ----- नगरं गमिष्यति।

4. सन्धि विच्छेदं कुरुत :-

(1/2X4=2)

(i) केनोपायेन = ----- + -----

(ii) सादरम् = ----- + -----

5. रेखांकितपदानि आधृत्य प्रश्ननिर्माणं कुरुत :-

(1X3=3)

(i) व्यवहारेण मित्राणि जायन्ते।

(ii) मृत्युः न प्रतीक्षते।

(iii) संस्कृतं सर्वान् शिक्षयति।

6. अधोलिखितानां पदानां विभक्तिं वचनं च लिखत :-

(1/2X4=2)

	पदानि	विभक्तिः	वचनम्
(i)	लीलया	-----	-----
(ii)	नराणाम्	-----	-----

7. यथायोग्यं संयोज्य लिखत :-

(1/2X4=2)

(क)

कौटिल्येन

आर्यभट्टः

वाल्मीकिः

सूक्तयः

(ख)

अभ्युदयाय प्रेरयन्ति।

रामायणम् अरचयत्।

अर्थशास्त्रं प्रणीतम्।

शून्यस्य प्रतिपादनम् अकरोत्।

8. संस्कृते अनुवादं कुरुत :- (1X2=2)
 (i) आलस्य नहीं करना चाहिए।
 (ii) पृथ्वी पर तीन रत्न हैं।
9. रेखांकितानि पदानि शुद्धं कृत्वा लिखत :- (1/2X4=2)
 (i) वृक्षेण पत्राणि पतन्ति।
 (ii) माता भिक्षुकं भिक्षां ददति।
 (iii) बालकस्य प्रति तस्य सहानुभूतिः नास्ति।
 (iv) पंगुः लगुडात् चलति।
10. मंजूषातः समानार्थकपदानि चित्वा लिखत :- (1/2X4=2)
- उड्डयन्ते, कानने, समूहाः, पृथ्वी
- (i) वने - -----
 (ii) धरा - -----
 (iii) उत्पतन्ति - -----
 (iv) वृन्दानि - -----
11. उपयुक्त कथनानां समक्षम् 'आम्' अनुपयुक्तकथनानां समक्षं 'न' इति लिखत :- (1/2X4=2)
 (i) सत्यं ब्रूयात्।-----
 (ii) चित्तं चलं नास्ति।-----
 (iii) व्यवहारे सर्वदा उदारता स्यात्।-----
 (iv) लोके इदं सर्वं चलाचलमस्ति।-----
12. कोष्ठकात् उचितं विशेषणपदं चित्वा रिक्तस्थानं पूरयत :- (1/2X4=2)
 (i) वसन्ते प्रकृतिः ----- भवति । (मनोहरा/ मनोहरः)
 (ii) ----- दृश्यं शोभनम् अस्ति। (अयं/ इदं)
 (iii) संस्कृतस्य ----- वाङ्मयं अस्ति। (विशालः/ विशालम्)
 (iv) पृथिव्याम् ----- रत्नानि सन्ति । (त्रयः/ त्रीणि)
13. अधोलिखितानि वाक्यानि घटनाक्रमानुसारेण लिखत :- (1/2X6=3)
 (क) शशकाः भासुरकं कूपम् अनयत्।
 (ख) सिंहः शशकाय अक्रुध्यत्।
 (ग) भासुरकः नामकः सिंहः वने प्रतिवसति स्म।
 (घ) सिंह क्रूरः आसीत्।
 (ङ) सिंहः प्रतिदिनं एकाधिकपशून् हन्ति स्म।
 (च) शशकः विलम्बेन सिंहस्य समक्षं गतवान्।
14. धातूनां लकारं पुरुषं च लिखत :- (1/2X4=2)
- | क्रिया | लकारः | पुरुषः |
|----------------|-------|--------|
| (i) अभवत् | ----- | ----- |
| (ii) उत्पतन्ति | ----- | ----- |

15. उचितैः शब्दरूपैः रिक्तस्थानानि पूरयत :-

(1/2X6=3)

- (i) अहम् , _____ , _____
(ii) एतस्य , एतयोः , _____
(iii) _____ , _____ मतिभिः
(iv) नद्याम् , नद्योः , _____ ,

16. उचितैः धातुरूपैः रिक्तस्थानानि पूरयत :-

(1/2X6=3)

- (i) आसीत् , आस्ताम् , _____
(ii) लिखतु , _____ , लिखन्तु
(iii) नमेयम् , _____ , _____
(iv) _____ , _____ , करिष्यन्ति,
-